

# Weekly Notice of Operations (WNoO)

## Beatrice Offshore Windfarm Limited

### Construction Operations



Issue Date: 16<sup>th</sup> October 2017

LF000005-WNO-013: Weekly Notice of Operations - Rev 23

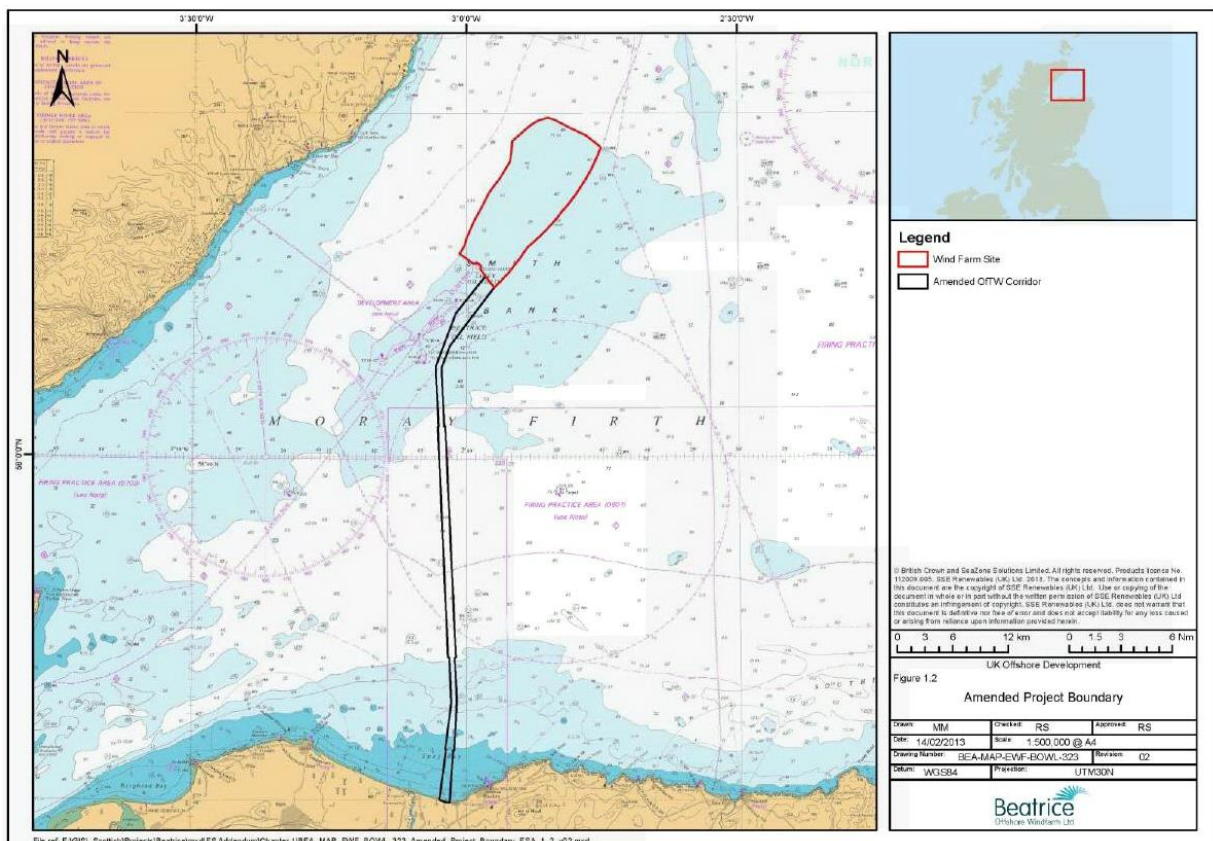
## Notice of Operations at Beatrice Offshore Wind Farm

Work Planned for the Period 16.10.2017 to 22.10.2017

Construction of the Beatrice Offshore Wind Farm commenced on the 1<sup>st</sup> of April.

This notice will be updated weekly giving information on the progress and resources involved in the offshore project. The intention is to give an overview of activities and vessels involved. Should anyone have questions regarding the operations, we kindly ask you to put them forward well in advance.

Beatrice Offshore Windfarm Limited (BOWL) is developing the Beatrice Offshore Wind Farm in the 'Outer' Moray Firth on the north-western point of the Smith Bank, approximately 7 nm off the Caithness coastline. The development site will cover an approximate area of up to 130km<sup>2</sup> and will consist of 84 7MW offshore wind turbines (with a total capacity of 588MW) and two HVAC Offshore Transformer Modules (OTM). Water depths in the area range from approximately 38m below LAT in the south of the field to 60m below LAT in the north. The generated power will be transmitted to the grid via two subsea export / transmission cables with a landfall near Portgordon to the south of the field and grid connection at Blackhillock. The transmission cables will cover a route of approximately 38 nm from the wind farm boundary back to the landfall. The Beatrice Offshore Wind Farm development area is highlighted in red below.



Beatrice Offshore Wind Farm Location

# Weekly Notice of Operations (WNoO)

## Beatrice Offshore Windfarm Limited

### Construction Operations



Issue Date: 16<sup>th</sup> October 2017

LF000005-WNO-013: Weekly Notice of Operations - Rev 23

#### 1. Contact Details for Marine Coordination

The following contact can provide more information if required. Please note that specific queries can also be addressed to the relevant vessel or shore based representative.

Telephone Number	+44 (0) 3302 020329
Emergency Contact (24/7)	+44 (0) 7342 028207
Email for Marine Coordinator	<a href="mailto:mc.bowl@sse.com">mc.bowl@sse.com</a>
Address	Unit 1 Harbour Office Wick Caithness KW1 5HA

#### 2. Ongoing Operations

##### 2.1 Beatrice Offshore Wind Farm Piling Campaign

Project:	Foundation Piling Campaign
Contractor:	SHL
Contract Purpose:	To install x 4 piles at the two OTM's and each Turbine Location within the construction site.
Area:	BOWL Construction Site: Foundation Locations. (See Fig 5 for details).
Deployment Dates:	01 April 2017 - 31 October 2017.
Deployment Vessel (s):	Stanislav Yudin, Smit Seraya, Smit Sentosa & Rix Lynx, with various tugs and associated barges.
Equipment:	Pile Installation Frame (PIF), Piling Hammer and Transport barges.

On behalf of BOWL, Seaway Heavy Lifting will deploy various vessels to carry out the aforementioned work during the period 01/04/2017 – 31/10/2017 within the boundary of the BOWL construction site (See Vessel Data Matrix).

In preparation for the installation of wind turbine foundations, in the Beatrice Offshore Windfarm construction site, a set of four piles will be installed in the seabed at each of the foundation locations. On completion, the date will be recorded in Table 1 below. A chart of piled locations will be recorded in Fig 2 below.

The Heavy Lift Vessel Stanislav Yudin will continue to install the remaining piles and then re-mobilise to continue the Jacket foundation installation.

# Weekly Notice of Operations (WNoO)

Beatrice Offshore Windfarm Limited

## Construction Operations



Issue Date: 16<sup>th</sup> October 2017

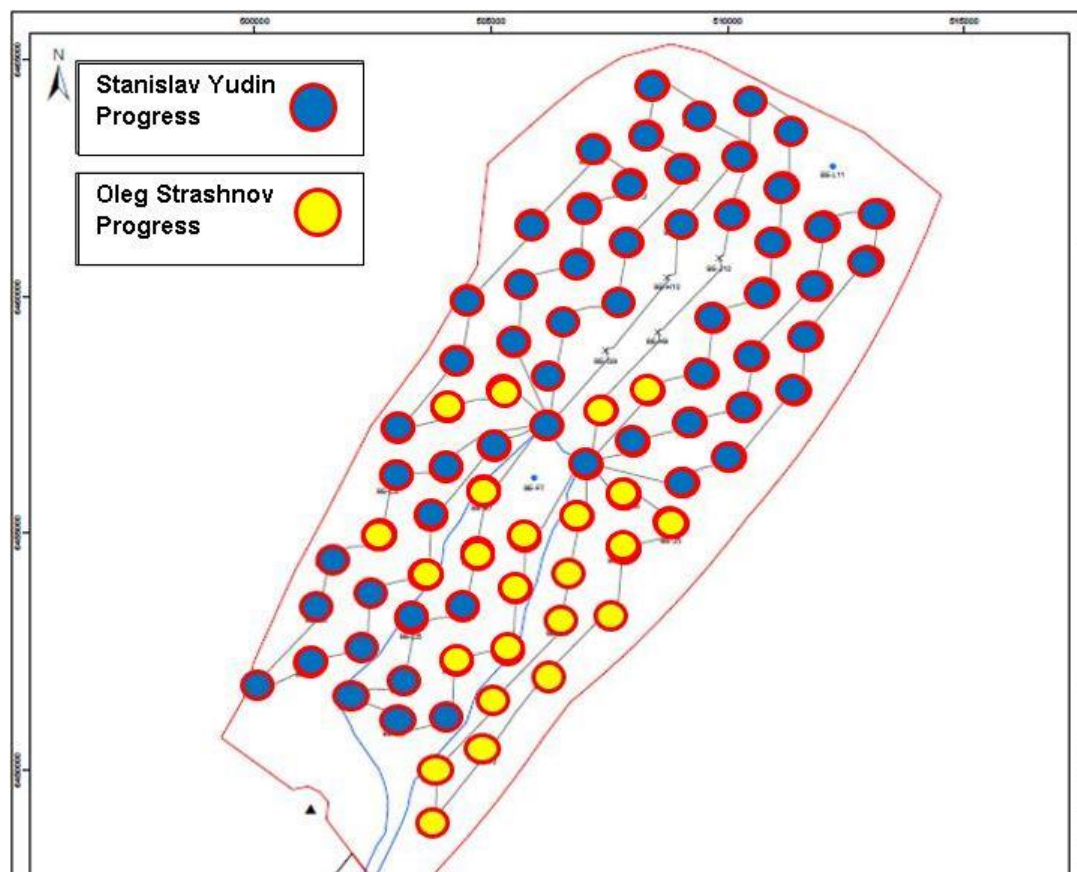
LF000005-WNO-013: Weekly Notice of Operations - Rev 23

### 2.2 Beatrice Offshore Wind Farm Jacket Installation Campaign

The current Jacket foundation installation campaign is now suspended until the Stanislav Yudin has completed pile installation and re-mobilises for foundation installation.

<b>Project:</b>	Jacket Installation Campaign (See Notice to Mariners) NTM-011
<b>Contractor:</b>	SHL
<b>Contract Purpose:</b>	To install WTG & OTM Jackets at completed piled locations within the construction site.
<b>Area:</b>	BOWL Construction Site: Jacket Locations. (See Fig1, Fig2, Table1.)
<b>Deployment Dates:</b>	08 August 2017 – September 2018.
<b>Deployment Vessel (s):</b>	Centaurus, Pegasus, Kamarina, Eraclea, President Hubert, Union Sovereign.
<b>Equipment:</b>	HLV equipment, Pile cleaning equipment, Grouting equipment.

Piled locations & Installed Jacket locations



Pile installation completed at: **82** Locations

Foundation installation completed at: **24** Locations

# Weekly Notice of Operations (WNoO)

## Beatrice Offshore Windfarm Limited

### Construction Operations



Issue Date: 16<sup>th</sup> October 2017

LF000005-WNO-013: Weekly Notice of Operations - Rev 23

Table 1 - WTG and OTM Location Coordinates

Location ID	Latitude WGS84	Longitude WGS84	Piling Complete	Jacket installed
BE-A5	58° 12.471' N	002° 59.996' W	14.07.2017	
BE-B5	58° 12.687' N	002° 58.873' W	12.07.2017	
BE-B6	58° 13.308' N	002° 58.664' W	16.06.2017	
BE-B7	58° 13.929' N	002° 58.456' W	18.07.2017	
BE-C4	58° 12.307' N	002° 57.948' W	23.05.2017	
BE-C5	58° 12.902' N	002° 57.749' W	11.07.2017	
BE-C6	58° 13.524' N	002° 57.541' W	10.07.2017	
BE-C7	58° 14.144' N	002° 57.332' W	15.06.2017	01.09.2017
BE-C8	58° 14.766' N	002° 57.124' W	17.07.2017	
BE-C9	58° 15.386' N	002° 56.915' W	28.08.2017	
BE-D3	58° 11.995' N	002° 57.002' W	21.05.2017	
BE-D4	58° 12.497' N	002° 56.834' W	22.06.2017	
BE-D5	58° 13.117' N	002° 56.626' W	26.05.2017	
BE-D6	58° 13.739' N	002° 56.417' W	13.06.2017	31.08.2017
BE-D7	58° 14.359' N	002° 56.209' W	31.05.2017	
BE-D8	58° 14.981' N	002° 55.999' W	02.06.2017	
BE-D9	58° 15.602' N	002° 55.790' W	16.07.2017	21.09.2017
BE-D10	58° 16.223' N	002° 55.582' W	31.08.2017	
BE-D11	58° 16.844' N	002° 55.373' W	13.08.2017	
BE-E1	58° 10.900' N	002° 56.256' W	10.04.2017	01.09.2017
BE-E2	58° 11.470' N	002° 56.128' W	14.04.2017	16.08.2017
BE-E3	58° 12.090' N	002° 55.920' W	19.04.2017	
BE-E4	58° 12.712' N	002° 55.710' W	02.07.2017	20.09.2017
BE-E5	58° 13.333' N	002° 55.502' W	19.05.2017	
BE-E6	58° 13.954' N	002° 55.293' W	18.05.2017	24.08.2017
BE-E7	58° 14.575' N	002° 55.084' W	01.06.2017	25.08.2017
BE-E8	58° 15.196' N	002° 54.875' W	30.05.2017	
BE-E9	58° 15.817' N	002° 54.665' W	15.07.2017	21.09.2017
BE-E10	58° 16.438' N	002° 54.456' W	01.09.2017	
BE-E11	58° 17.059' N	002° 54.247' W	19.09.2017	
BE-E12	58° 17.680' N	002° 54.037' W	14.08.2017	
BE-F2	58° 11.685' N	002° 55.005' W	03.07.2017	06.09.2017
BE-F3	58° 12.306' N	002° 54.796' W	17.04.2017	07.09.2017
BE-F4	58° 12.927' N	002° 54.588' W	04.07.2017	19.09.2017
BE-F5	58° 13.548' N	002° 54.378' W	17.05.2017	14.09.2017
BE-F6	58° 14.168' N	002° 54.169' W	11.05.2017	11.09.2017
BE-F8 (OTM2)	58° 15.411' N	002° 53.750' W	08.04.2017	
BE-F9	58° 16.031' N	002° 53.540' W	22.09.2017	
BE-F10	58° 16.653' N	002° 53.330' W	20.09.2017	
BE-F11	58° 17.274' N	002° 53.120' W	07.09.2017	
BE-F12	58° 17.894' N	002° 52.911' W	05.07.2017	

# Weekly Notice of Operations (WNoO)

Beatrice Offshore Windfarm Limited

## Construction Operations



Issue Date: 16<sup>th</sup> October 2017

LF000005-WNO-013: Weekly Notice of Operations - Rev 23

Location ID	Latitude WGS84	Longitude WGS84	Piling Complete	Jacket installed
BE-F13	58° 18.516' N	002° 52.701' W	10.09.2017	
BE-G3	58° 12.544' N	002° 53.726' W	28.05.2017	15.08.2017
BE-G4	58° 13.142' N	002° 53.464' W	17.06.2017	08.09.2017
BE-G5	58° 13.762' N	002° 53.254' W	10.05.2017	09.09.2017
BE-G6	58° 14.384' N	002° 53.044' W	06.05.2017	20.08.2017
BE-G7 (OTM1)	58° 15.004' N	002° 52.834' W	03.04.2017	
BE-G8	58° 15.625' N	002° 52.625' W	07.07.2017	10.09.2017
BE-G9	58° 16.247' N	002° 52.415' W		
BE-G10	58° 16.867' N	002° 52.204' W	21.09.2017	
BE-G11	58° 17.488' N	002° 51.994' W	20.08.2017	
BE-G12	58° 18.109' N	002° 51.784' W	18.08.2017	
BE-G13	58° 18.730' N	002° 51.574' W	13.09.2017	
BE-G14	58° 19.351' N	002° 51.362' W	14.09.2017	
BE-H4	58° 13.356' N	002° 52.339' W	19.06.2017	13.08.2017
BE-H5	58° 13.977' N	002° 52.130' W	20.06.2017	27.08.2017
BE-H6	58° 14.598' N	002° 51.920' W	20.04.2017	21.08.2017
BE-H7	58° 15.219' N	002° 51.709' W	08.07.2017	
BE-H8	58° 15.840' N	002° 51.499' W	06.05.2017	13.09.2017
BE-H9	58° 16.461' N	002° 51.289' W		
BE-H10	58° 17.082' N	002° 51.079' W		
BE-H11	58° 17.703' N	002° 50.867' W	10.10.2017	
BE-H12	58° 18.324' N	002° 50.657' W	09.09.2017	
BE-H13	58° 18.944' N	002° 50.446' W	07.10.2017	
BE-J5	58° 14.192' N	002° 51.005' W	04.05.2017	26.08.2017
BE-J6	58° 14.812' N	002° 50.795' W	21.06.2017	
BE-J7	58° 15.433' N	002° 50.585' W	06.08.2017	
BE-J8	58° 16.055' N	002° 50.373' W	12.06.2017	
BE-J9	58° 16.675' N	002° 50.163' W	04.08.2017	
BE-J10	58° 17.296' N	002° 49.952' W		
BE-J11	58° 17.917' N	002° 49.741' W	26.08.2017	
BE-J12	58° 18.538' N	002° 49.530' W	27.08.2017	
BE-J13	58° 19.159' N	002° 49.319' W	08.10.2017	
BE-K6	58° 15.027' N	002° 49.669' W	07.08.2017	
BE-K7	58° 15.648' N	002° 49.459' W	08.08.2017	
BE-K8	58° 16.269' N	002° 49.247' W	31.07.2017	
BE-K9	58° 16.890' N	002° 49.036' W	05.08.2017	
BE-K10	58° 17.510' N	002° 48.825' W	21.08.2017	
BE-K11	58° 18.131' N	002° 48.614' W	25.08.2017	
BE-K12	58° 18.752' N	002° 48.403' W	09.10.2017	
BE-L7	58° 15.862' N	002° 48.333' W	09.08.2017	
BE-L8	58° 16.482' N	002° 48.122' W	25.07.2017	
BE-L9	58° 17.104' N	002° 47.910' W	31.07.2017	
BE-L10	58° 17.724' N	002° 47.698' W	30.07.2017	



# Weekly Notice of Operations (WNoO)

Beatrice Offshore Windfarm Limited

## Construction Operations

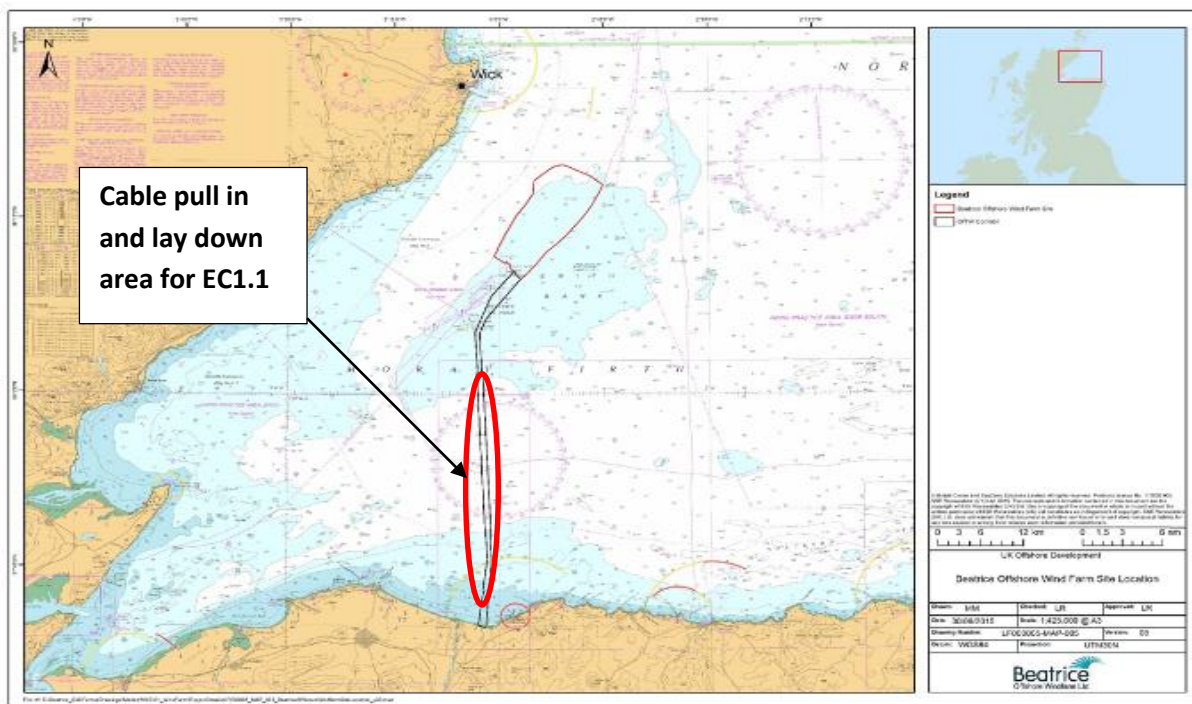


Issue Date: 16<sup>th</sup> October 2017

LF000005-WNO-013: Weekly Notice of Operations - Rev 23

Location ID	Latitude WGS84	Longitude WGS84	Piling Complete	Jacket installed
BE-M9	58° 17.317' N	002° 46.784' W	27.07.2017	
BE-M10	58° 17.938' N	002° 46.571' W	28.07.2017	

### 2.3 Installation of Export Cable EC1.1



Approximate location of cable pull in end EC1.1 near shore	Latitude WGS84	Longitude WGS84
KP 0.450 on EC1	57° 42.236'N	003°01.955'W
Location of cable laydown end EC1.1	Latitude WGS84	Longitude WGS84
KP 34 on EC1	57° 58.0615'N	003°02.2797'W

#### 2.3.1 Activity Description

On behalf of BOWL, Nexans Norway AS using the cable laying vessel Skagerrak will install the first section of an export cable.

The First part of the cable installation process, pulling the cable ashore and lowering it to the seabed has been completed.

The cable installation vessel Skagerrak has completed laying the EC1.1 cable on the seabed along the pre-prepared cable route out to approximately KP34 where it has been sealed and the end laid on the

# Weekly Notice of Operations (WNoO)

## Beatrice Offshore Windfarm Limited

### Construction Operations

Issue Date: 16<sup>th</sup> October 2017

LF000005-WNO-013: Weekly Notice of Operations - Rev 23

seabed. Nexans Skagerrak has mobilised trenching equipment and has been trenching and surveying between KP34 inshore towards KP 2.0. Nexans Skagerrak plans to depart the work site on Tuesday 17<sup>th</sup> October to load out Export Cable 1.2 and 3.


DSV Aramis will utilise a mini capjet trenching tool to trench from KP2.0 towards KP0.450.

A Seabed Positioning system will be deployed to assist with accurate positioning of trenching equipment for the nearshore trenching work, it shall be placed on the seabed in position 57°42.257'N 003°01.908'W (GRS1980) this position is within the OfTO cable corridor. The positioning system is approximately 2m x 1.7m and extends 2m above the seabed. The equipment will not be marked with a surface buoy. It will remain in this position until after the second export cable, EC1.2 has been laid and buried including the rock placement phase.

Any exposed cable is particularly vulnerable to vessels engaged in trawling or fishing or vessels anchoring. All vessels engaged in these activities are requested to be particularly vigilant in the vicinity of this cable and avoid entering the specified OfTO corridor while doing so.

Any exposed cable will be protected by two guard vessels, Artemis, and Morning Dawn who will guard and monitor the cable laydown area.

The Dive Support Vessel Aramis will assist the Skagerrak with survey work.

Skagerrak	
<b>General Description and Dimensions:</b>	Cable Layer L: 99.75m B: 35.41m
<b>Call Sign:</b>	LCEK
<b>MMSI:</b>	257253000
<b>Onshore Representative:</b>	Øyvind Haug BEATRICE Installation Engineering Manager Mob: +47 916 27 674 Office: +47 22 88 65 09
	
Artemis FR 809	
<b>General Description and Dimensions:</b>	Guard Vessel, L:28m / B: 8m
<b>Call Sign:</b>	2SNV
<b>MMSI:</b>	235066582


# Weekly Notice of Operations (WNoO)

Beatrice Offshore Windfarm Limited

## Construction Operations

Issue Date: 16<sup>th</sup> October 2017

LF000005-WNO-013: Weekly Notice of Operations - Rev 23

<b>Onshore Representative:</b>	Øyvind Haug BEATRICE Installation Engineering Manager Mob: +47 916 27 674 Office: +47 22 88 65 09
	
<b>Morning Dawn / PD359</b>	
<b>General Description and Dimensions:</b>	Guard Vessel, L:40.2 m / B: 9 m
<b>Call Sign:</b>	MHEU3
<b>MMSI:</b>	232253000
<b>Onshore Representative:</b>	Øyvind Haug BEATRICE Installation Engineering Manager Mob: +47 916 27 674 Office: +47 22 88 65 09
	
<b>DSV Aramis</b>	
<b>General Description and Dimensions:</b>	Aluminium Workboat;15.7m, 4.95m 0.80m
<b>Call Sign:</b>	LDEH
<b>MMSI:</b>	257167000
<b>Onshore Representative:</b>	Oyvind Haug E-mail: oyvind.haug@nexans.com
	

### 2.4 Subsea marker buoys on the exit pipe of EC2 at Portgordon



# Weekly Notice of Operations (WNoO)

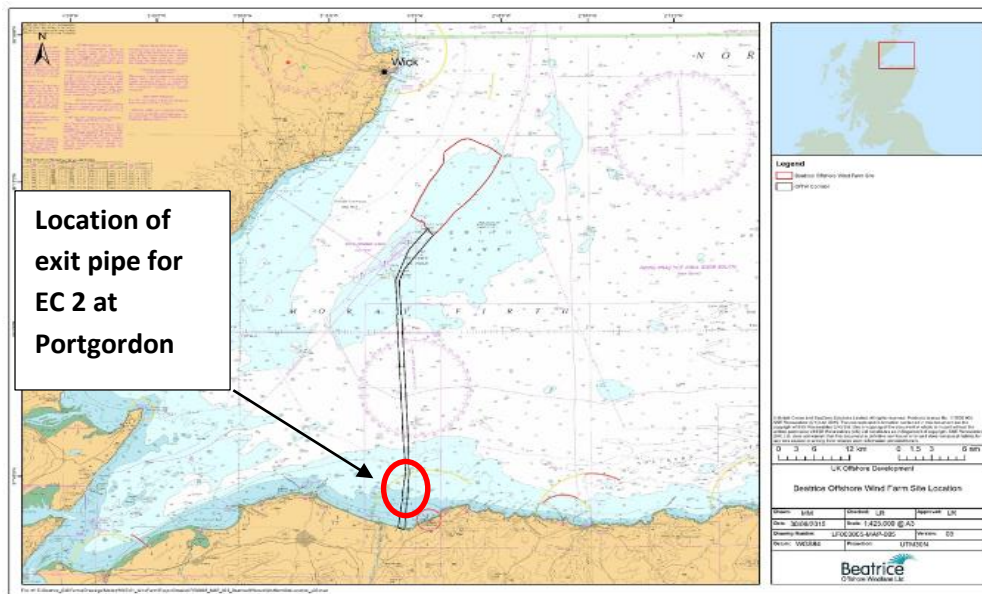
Beatrice Offshore Windfarm Limited

## Construction Operations



Issue Date: 16<sup>th</sup> October 2017

LF000005-WNO-013: Weekly Notice of Operations - Rev 23

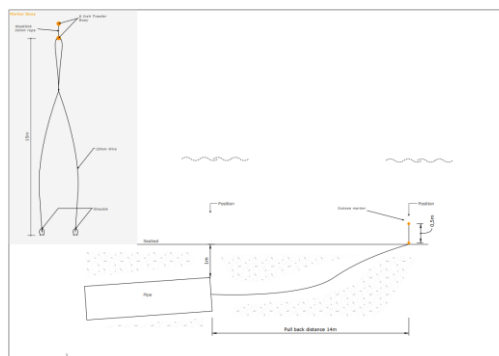


Exit pipe marker buoy Location	Latitude WGS84	Longitude WGS84
EC2 pipe exit	57°40.143'N	003° 02.655'W

### 2.4.1 Activity Description

Diving works have been completed at EC2, the Haven Seariser has been towed back to Buckie Harbour. At the EC2 exit point approximately 450m offshore, the sealed pipe end has been marked with sub-sea marker buoys to assist divers locate the exit point when EC2.1 is being prepared for pull in.

The marker buoy rig consists of a 10mm steel wire, 30m long, both ends attached to the pipe flange with shackles. The remaining slack (loop) will be stretched out along the pipe route and is fitted with two 6inch trawler buoys. Both will be subsea and have a maximum height of 0,5m over seabed.



EC2 direct pipe end Marker buoy rig

# Weekly Notice of Operations (WNoO)

## Beatrice Offshore Windfarm Limited

### Construction Operations



Issue Date: 16<sup>th</sup> October 2017

LF000005-WNO-013: Weekly Notice of Operations - Rev 23

### 3. Completed Operations

Mariners are advised that, further to notice UoA/08/2017 and in conjunction with Beatrice Offshore Windfarm Limited (BOWL), the University of Aberdeen has **installed** scientific equipment moorings in the Moray Firth at the locations listed in table 1, below (see also chart extracts at the foot of this notice):

Table 1.

Name	As laid coordinates (WGS84 datum)		Characteristics
201	58° 19.109' N	2° 51.632' W	Subsurface.
202	58° 19.136' N	2° 51.652' W	Subsurface.
203	58° 19.163' N	2° 51.677' W	Subsurface.
204	58° 19.184' N	2° 51.691' W	Subsurface.

The moorings support sound recording equipment, and acoustic loggers that record echolocation clicks of dolphins and porpoises (see images of devices at the foot of this notice). All the above moorings are subsurface, consisting of a 50kg weight and a terminated rope riser. The above moorings do not extend more than three metres vertically from the seabed.

Mariners should also note that the following existing moorings (table 2) **remain in place** in the Moray Firth, as per our Notice to Mariners UoA/08/2017, and where appropriate in accordance with marine licence 05594/15/0 (see also chart extracts at the foot of this notice):

Table 2.

Name	As laid coordinates (WGS84 datum)		Characteristics
1	57° 41.413' N	3° 58.953' W	Subsurface
2	57° 35.133' N	4° 05.891' W	Surface marked (NB50 buoy, red)
3	57° 44.073' N	3° 19.776' W	Surface marked (dhan, 12' aluminium & RADAR reflector)
4	57° 41.357' N	3° 05.547' W	Surface marked (NB50 buoy, red)
17	57° 57.759' N	3° 31.260' W	Subsurface with acoustic release.
40	57° 48.988' N	3° 36.379' W	Subsurface with acoustic release.
41	57° 51.141' N	3° 33.018' W	Subsurface with acoustic release.
42	57° 52.337' N	3° 29.058' W	Subsurface with acoustic release.
44	57° 56.261' N	3° 21.438' W	Subsurface with acoustic release.
45	57° 57.261' N	3° 16.084' W	Subsurface with acoustic release.
46	58° 00.861' N	3° 15.407' W	Subsurface with acoustic release.
47	58° 00.817' N	3° 08.549' W	Subsurface.
48	58° 04.009' N	3° 06.916' W	Subsurface.
49	58° 04.450' N	3° 00.999' W	Subsurface.
54	58° 13.520' N	2° 41.961' W	Subsurface.
56	58° 18.724' N	2° 37.062' W	Subsurface.
64	57° 42.521' N	3° 30.174' W	Surface marked (dhan, 12' aluminium & RADAR reflector)
65	57° 43.485' N	3° 25.174' W	Surface marked (dhan, 12' aluminium & RADAR reflector)
66	57° 43.082' N	3° 14.977' W	Surface marked (dhan, 12' aluminium & RADAR reflector)
67	57° 42.069' N	3° 10.026' W	Surface marked (dhan, 12' aluminium & RADAR reflector)

# Weekly Notice of Operations (WNoO)

Beatrice Offshore Windfarm Limited

## Construction Operations



Issue Date: 16<sup>th</sup> October 2017

LF000005-WNO-013: Weekly Notice of Operations - Rev 23

82	58° 00.625' N	3° 25.691' W	Subsurface with acoustic release.
89	57° 56.056' N	3° 38.252' W	Subsurface with acoustic release.
90	58° 01.064' N	3° 36.596' W	Subsurface with acoustic release.
98	57° 54.168' N	3° 17.857' W	Subsurface.
99	57° 50.854' N	3° 24.453' W	Subsurface with acoustic release.
108	58° 18.993' N	2° 59.223' W	Subsurface.
110	58° 07.668' N	2° 45.374' W	Subsurface.
146	58° 15.224' N	2° 53.322' W	Subsurface with transponder.
149	58° 16.151' N	2° 51.899' W	Subsurface with transponder.
150	58° 16.755' N	2° 50.970' W	Subsurface with transponder.
159	58° 09.260' N	2° 52.234' W	Subsurface.
160	58° 17.648' N	2° 49.931' W	Subsurface with transponder.
161	58° 12.933' N	2° 55.954' W	Subsurface with transponder.
162	58° 18.176' N	2° 54.124' W	Subsurface with transponder.
163	58° 17.966' N	2° 44.992' W	Subsurface.
164	58° 12.830' N	2° 51.669' W	Subsurface with transponder.
165	58° 12.478' N	3° 01.251' W	Subsurface.
175	58° 18.725' N	2° 46.841' W	Subsurface.
178	58° 17.987' N	2° 49.250' W	Subsurface.
179	58° 17.981' N	2° 50.020' W	Subsurface.
180	58° 18.482' N	2° 52.002' W	Subsurface with transponder.
181	58° 19.065' N	2° 51.260' W	Subsurface with transponder.
182	58° 15.000' N	2° 55.733' W	Subsurface with transponder.
183	58° 20.235' N	2° 50.708' W	Subsurface.
184	58° 15.422' N	2° 47.713' W	Subsurface.
185	58° 11.356' N	2° 59.450' W	Subsurface with transponder.
186	57° 50.695' N	3° 39.256' W	Subsurface with acoustic release.
187	57° 56.050' N	3° 45.720' W	Subsurface with acoustic release.
188	57° 55.919' N	3° 53.286' W	Subsurface with acoustic release.
189	57° 59.405' N	3° 48.781' W	Subsurface with acoustic release.
190	58° 07.723' N	3° 07.467' W	Subsurface.
191	58° 16.536' N	2° 46.446' W	Subsurface.
192	58° 12.183' N	3° 26.160' W	Subsurface with acoustic release.
193	58° 07.198' N	3° 34.320' W	Subsurface with acoustic release.
194	57° 57.660' N	3° 57.358' W	Subsurface with acoustic release.
195	57° 54.741' N	3° 31.761' W	Subsurface with acoustic release.
196	58° 14.097' N	2° 54.656' W	Subsurface with transponder.
197	58° 12.063' N	2° 57.544' W	Subsurface with transponder.

A further Notice to Mariners will be issued when the removed moorings are permanently discontinued.

For information and enquiries please contact:  
Tim Candido Barton,

# Weekly Notice of Operations (WNoO)

## Beatrice Offshore Windfarm Limited

### Construction Operations

Issue Date: 16<sup>th</sup> October 2017

LF000005-WNO-013: Weekly Notice of Operations - Rev 23

Lighthouse Field Station, University of Aberdeen, George St., Cromarty, Ross-shire, IV11 8YL.  
+44 (0)1381 600548.

[t.r.barton@abdn.ac.uk](mailto:t.r.barton@abdn.ac.uk)



Acoustic logger  
(600 x 95mm)

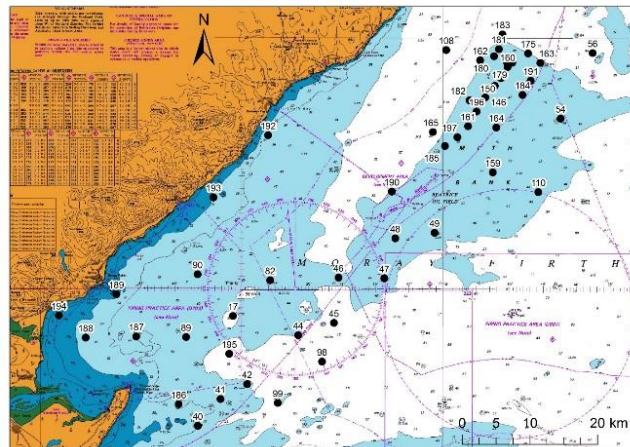


Sound Recorder  
(900 x 170mm)

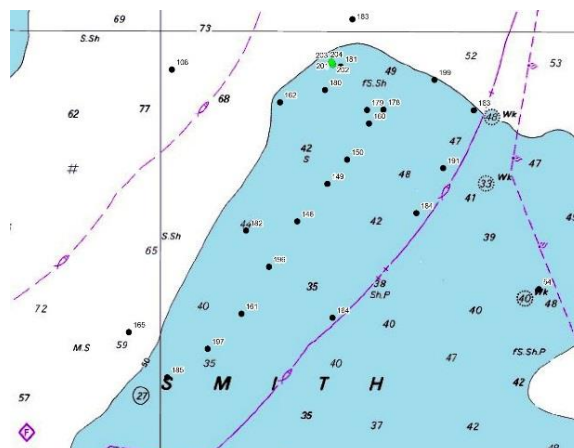


Sound recorder  
(200 x 60mm)

Examples of equipment which the above moorings support.



Mooring locations – Moray Firth, excluding sites along the Moray Firth southern shore.





# Weekly Notice of Operations (WNoO)

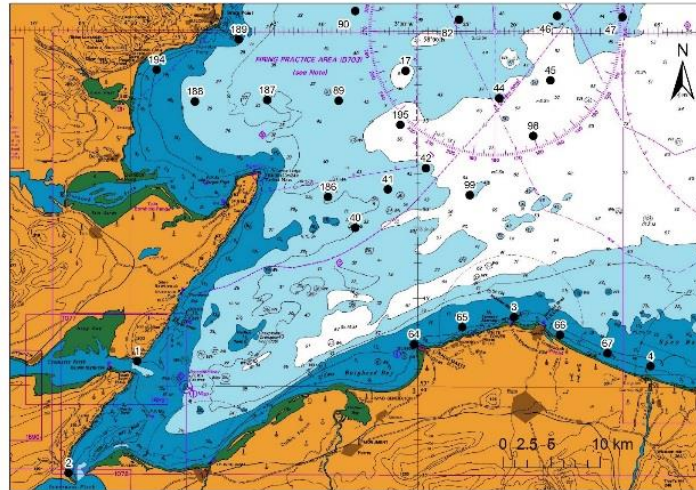
## Beatrice Offshore Windfarm Limited

### Construction Operations

Issue Date: 16<sup>th</sup> October 2017

LF000005-WNO-013: Weekly Notice of Operations - Rev 23

Mooring locations – detail of Smith Bank sites, showing new locations (green). Moray Firth.



Mooring locations – detail of south side of Moray Firth sites.

#### 4. General Safety Advice

All vessels engaged in the activity will exhibit appropriate lights and shapes prescribed by the International Regulations for Preventing Collisions at Sea; relative to their operations. All vessels engaged in the activity will also transmit an Automatic Identification System (AIS) message.

The Secretary of State has authorised the use of the following safety zones as per Notice to Mariners LF000005-NTM-004.

1. 500 metres radius around each wind turbine, offshore transformer module and / or their substructures and foundations comprising the Beatrice Offshore Wind Farm whilst work is being performed as indicated by the presence of construction vessels.
2. 50 metres radius around each wind turbine, offshore transformer module and / or their substructure and foundations installed but waiting to be commissioned as part of the Beatrice Offshore Wind Farm.

ALL VESSELS ARE REQUESTED to give all construction and support vessels a wide berth.

MARINERS ARE REMINDED to navigate with caution and keep continued watch on VHF Ch. 70 / 16 when navigating the area.

#### 5. Guard Vessel Deployment

Guard vessels currently on location are Sardonyx II BF794 and Seagull BF74 on the main Construction site and Artemis FR809 and Morning Dawn PD359 on the Export Cable route. All guard vessels can be contacted on VHF Ch.16

<b>Project:</b>	Beatrice Offshore Windfarm Guard Vessel Deployment.
<b>Contractor:</b>	SHL – SFF Services Ltd.
<b>Contract Purpose:</b>	Guard Vessel for the Windfarm site.

# Weekly Notice of Operations (WNoO)

## Beatrice Offshore Windfarm Limited

### Construction Operations



Issue Date: 16<sup>th</sup> October 2017

LF000005-WNO-013: Weekly Notice of Operations - Rev 23

<b>Area:</b>	BOWL construction site: within the array cable routes and foundation locations. (See Fig 1 for details)
<b>Deployment Dates:</b>	1 <sup>st</sup> April 2017 – TBC.
<b>Deployment Vessel (s):</b>	Various on a continuous 21 day rotation.
<b>Equipment:</b>	N/A

On behalf of BOWL, Seaways Heavy Lifting has contracted the Scottish Fishermen's Federation to provide guard vessels during the piling and foundation installation campaigns. Nexans of Norway AS have contracted the SFF to provide guard vessels during the Export cable installation campaign. These vessels will change regularly.

The guard vessel's primary duty is security of the construction site by informing and warning non-construction vessels of the ongoing activities and associated Safety Zones.

#### 6. Fisheries Liaison

Fisheries liaison associated with the activity will be co-ordinated by Brown and May Marine. For any commercial fishery queries please contact: Alex Winrow-Giffin, telephone: +44 (0)1379 872144 and mobile: +44 (0)7760 160039. [alex@brownmay.com](mailto:alex@brownmay.com)

#### 7. Distribution List

The distribution of this notice is as per email recipient's header. A central list of recipients is maintained by the Marine Coordinator. If you are not the appropriate recipient of these notices, or do not wish to receive the notices in the future, please contact us at the address included in Section 1 of this notice.

#### 8. Website

The official website of Beatrice Offshore Windfarm Limited can be found at:

<https://www.beatricewind.com/>

This contains all Notices to Mariners (NtM) published by BOWL and all Weekly Notices of Operations, together with a large amount of general information about the Project.

There is also a Twitter feed at <https://twitter.com/beatricewind>.

# Weekly Notice of Operations (WNoO)

## Beatrice Offshore Windfarm Limited

### Construction Operations



Issue Date: 16<sup>th</sup> October 2017

LF000005-WNO-013: Weekly Notice of Operations - Rev 23

Beatrice Offshore Windfarm  
Vessels, agents, contractors and sub-contractors

Date: 16-Oct-17

Reference to Marine Licence Conditions  
2.5, 2.6 and 3.1.2

### Vessel Data Matrix



No Ref	Vessel Picture	Vessel Name / Flag	Type / Function	Operator	Contact / contact details	Call sign / MMSI / IMO	LOA (m) Beam (m) Draft (m)	Date on Site
1		Stanislav Yudin	Heavy Lift Vessel	Seaway Heavy Lifting (SHL)	Danny Sprangers (SHL) C/o Subsea 7 East Campus Amhall Business Park Westhill, Aberdeenshire AB32 6FE +31 653997158 EMAIL: dsprangers@shl.nl	5BYM2 / 210334000	183.3 / 40.0 / 8.9	27.03.2017
2		Smit Sentosa	Anchor Handling Tug assisting the Stanislav Yudin	Seaway Heavy Lifting (SHL)	Danny Sprangers (SHL) C/o Subsea 7 East Campus Amhall Business Park Westhill, Aberdeenshire AB32 6FE +31 653997158 EMAIL: dsprangers@shl.nl	ORRX / 205606000	51.8 / 15.0 / 6.2	27.03.2017
3		Rix Lynx	Crew Transfer Vessel / CTV	Seaway Heavy Lifting (SHL)	Danny Sprangers (SHL) C/o Subsea 7 East Campus Amhall Business Park Westhill, Aberdeenshire AB32 6FE +31 653997158 EMAIL: dsprangers@shl.nl	2JGQ6 / 235115745	26 / 7.0 / 2.0	27.03.2017
4		Seagull BF74	Guard Vessel	Scottish Fishermens Federation (SFF) for Seaway Heavy Lifting (SHL)	Danny Sprangers (SHL) C/o Subsea 7 East Campus Amhall Business Park Westhill, Aberdeenshire AB32 6FE +31 653997158 EMAIL: dsprangers@shl.nl	MVBO2/233714000	30.0 / 8.0 / 3.0	07.10.2017
5		Union Fighter	Barge Tow Vessel	Seaway Heavy Lifting (SHL)	Danny Sprangers (SHL) C/o Subsea 7 East Campus Amhall Business Park Westhill, Aberdeenshire AB32 6FE +31 653997158 EMAIL: dsprangers@shl.nl	ORPP/205566000	40.6/ 12.7/ 6.3	03.08.2017
6		Smit Seraya	Barge Tow Vessel	Seaway Heavy Lifting (SHL)	Danny Sprangers (SHL) C/o Subsea 7 East Campus Amhall Business Park Westhill, Aberdeenshire AB32 6FE +31 653997158 EMAIL: dsprangers@shl.nl	ØV9645/ 566804000/	51.8 x 16 x 6	13.05.2017
7		Centaurus	Barge Tow Vessel	Seaway Heavy Lifting (SHL)	Danny Sprangers (SHL) C/O Subsea 7 East Campus Amhall Business Park Westhill, Aberdeenshire, AB32 6FE +31 653997158 Email - dsprangers@shl.nl	V2ED3 / 305820000	48.81m x 14.06m	08.08.2017

# Weekly Notice of Operations (WNoO)

## Beatrice Offshore Windfarm Limited

### Construction Operations



Issue Date: 16<sup>th</sup> October 2017

LF000005-WNO-013: Weekly Notice of Operations - Rev 23

8		Pegasus	Barge Tow Vessel	Seaway Heavy Lifting (SHL)	Danny Sprangers (SHL) C/O Subsea 7 East Campus Amhall Business Park Westhill, Aberdeenshire, AB32 6FE +31 653997158 Email - dsprangers@shl.nl	V2ED2 / 305389000	48.81m x 14.06m	08.08.2017
9		Kamarina	Barge Tow Vessel	Seaway Heavy Lifting (SHL)	Danny Sprangers (SHL) C/O Subsea 7 East Campus Amhall Business Park Westhill, Aberdeenshire, AB32 6FE +31 653997158 Email - dsprangers@shl.nl	IITW2 / 247278400	50m x 15m	08.08.2017
10		Eraclea	Barge Tow Vessel	Seaway Heavy Lifting (SHL)	Danny Sprangers (SHL) C/O Subsea 7 East Campus Amhall Business Park Westhill, Aberdeenshire, AB32 6FE +31 653997158 Email - dsprangers@shl.nl	IITX2 / 247278500	50m x 15m	08.08.2017
11		Union Sovereign	Barge Tow Vessel	Seaway Heavy Lifting (SHL)	Danny Sprangers (SHL) C/O Subsea 7 East Campus Amhall Business Park Westhill, Aberdeenshire, AB32 6FE +31 653997158 Email - dsprangers@shl.nl	ORQW / 205644000	67.4m x 15.5m	21.08.2017
12		Seacat Intrepid	Crew Transfer Vessel / CTV	Seacat Services Ltd	Lea Hurst Marine Manager, Seacat Services Ltd 2 Mariners Way, Cowes, Isle of Wight +44 (0)1983 475315 lea.hurst@seacatservices.co.uk	2HWU6 / 235107284	27m x 10m	25.09.2017
13		Sardonyx II BF794	Guard Vessel	Scottish Fishermens Federation (SFF) for Seaway Heavy Lifting (SHL)	Danny Sprangers (SHL) C/O Subsea 7 East Campus Amhall Business Park Westhill, Aberdeenshire AB32 6FE +31 653997158 EMAIL:dsprangers@shl.nl	MQUY6 / 234311000	18.4 X 6.3 x 3.0	15.10.2017



# Weekly Notice of Operations (WNoO)

## Beatrice Offshore Windfarm Limited

### Construction Operations



Issue Date: 16<sup>th</sup> October 2017

LF000005-WNO-013: Weekly Notice of Operations - Rev 23





Date: 16-Oct-17

Vessels, agents, contractors and sub-contractors

Reference to Marine Licence Conditions 2.5,  
2.6 and 3.1.2

### Vessel Data Matrix for Buckie



No Ref	Vessel Picture	Vessel Name / Flag	Type / Function	Operator	Company Name / Contact / contact details	Call sign / MMSI / IMO	LOA (m) Beam (m) Draft (m)	Date on Site
1		DSV Aramis	Workboat	Adger Dykk AS Bedriftsveien 20, 4841 Arendal Norway +47 970 82 058	Øyvind Haug BEATRICE Installation Engineering Manager Mob: +47 918 27 674 Office: +47 22 88 65 09	LDEH / 257167000	15.7m, 4.95m 0.80m	11.09.2017
2		Skagerrak	Export Cable laying Vessel	Nexans Norway AS Innsporten 9, 0863 Oslo, Norway +47 22 88 61 00	Øyvind Haug BEATRICE Installation Engineering Manager Mob: +47 918 27 674 Office: +47 22 88 65 09	LCEK / 25723000	99.75m x 35.41m	27.09.2017
3		Artemis FR809	Guard Vessel / export cable	Scottish Fishermens Federation (SFF) for Nexans Norway AS	Øyvind Haug BEATRICE Installation Engineering Manager Mob: +47 918 27 674 Office: +47 22 88 65 09	2SNV / 235066582	28m x 8m	27.09.2017
4		Morning Dawn PD359	Guard Vessel / export cable	Scottish Fishermens Federation (SFF) for Nexans Norway AS	Øyvind Haug BEATRICE Installation Engineering Manager Mob: +47 918 27 674 Office: +47 22 88 65 09	MHEU3 / 232253000	40.2m x 9.0m x 5.0m	16.10.2017