

Weekly Notice of Operations (WNoO)

Beatrice Offshore Windfarm Limited

Construction Operations



Issue Date: 28th August 2017

LF000005-WNO-013: Weekly Notice of Operations - Rev 16

Notice of Operations at Beatrice Offshore Wind Farm

Work Planned for the Period 28.08.2017 to 03.09.2017

Construction of the Beatrice Offshore Wind Farm commenced on the 1st of April.

This notice will be updated weekly giving information on the progress and resources involved in the offshore project. The intention is to give an overview of activities and vessels involved. Should anyone have questions regarding the operations, we kindly ask you to put them forward well in advance.

Beatrice Offshore Windfarm Limited (BOWL) is developing the Beatrice Offshore Wind Farm in the 'Outer' Moray Firth on the north-western point of the Smith Bank, approximately 7 nm off the Caithness coastline. The development site will cover an approximate area of up to 130km² and will consist of 84 7MW offshore wind turbines (with a total capacity of 588MW) and two HVAC Offshore Transformer Modules (OTM). Water depths in the area range from approximately 38m below LAT in the south of the field to 60m below LAT in the north. The generated power will be transmitted to the grid via two subsea export / transmission cables with a landfall near Portgordon to the south of the field and grid connection at Blackhillock. The transmission cables will cover a route of approximately 38 nm from the wind farm boundary back to the landfall. The Beatrice Offshore Wind Farm development area is highlighted in red below.

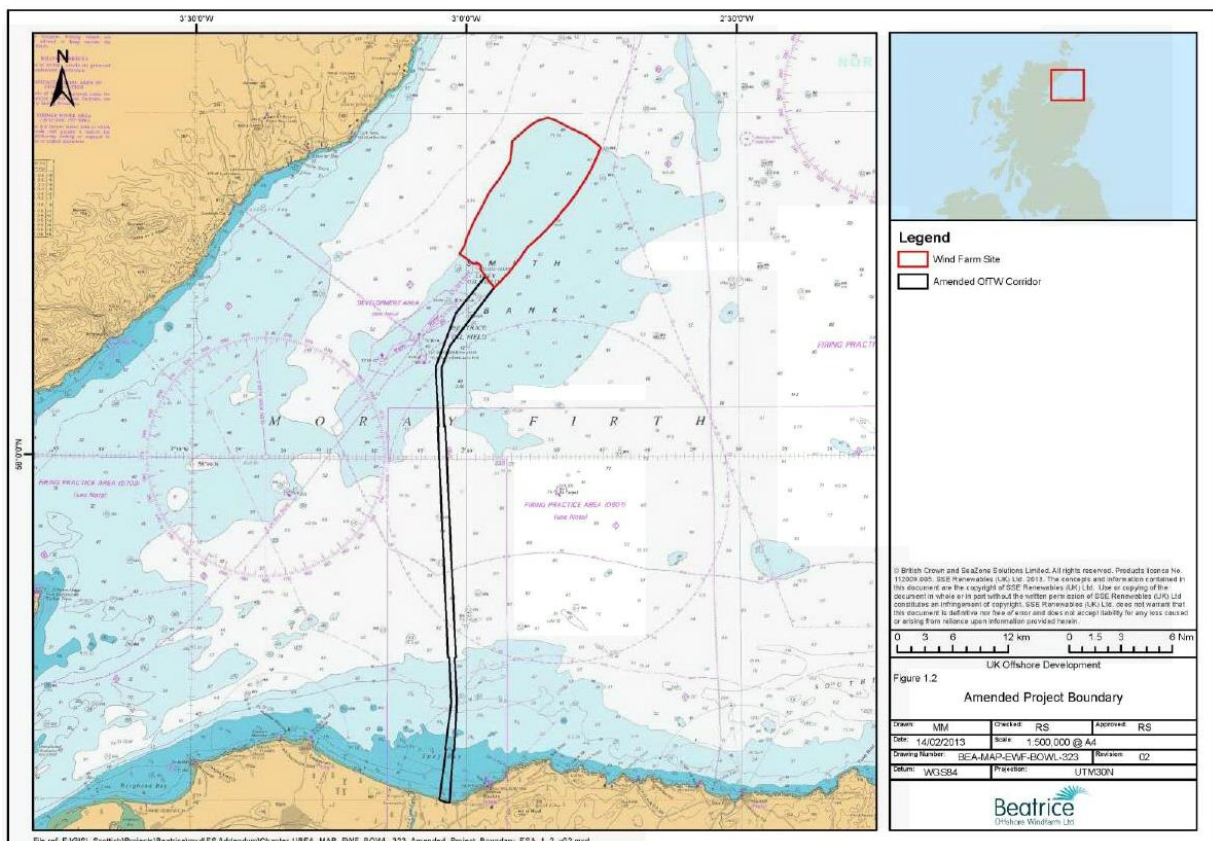


Fig 1 – Beatrice Offshore Wind Farm Location

Weekly Notice of Operations (WNoO)

Beatrice Offshore Windfarm Limited

Construction Operations



Issue Date: 28th August 2017

LF000005-WNO-013: Weekly Notice of Operations - Rev 16

1. Contact Details for Marine Coordination

The following contact can provide more information if required. Please note that specific queries can also be addressed to the relevant vessel or shore based representative.

Telephone Number	+44 (0) 3302 020329
Emergency Contact (24/7)	+44 (0) 7342 028207
Email for Marine Coordinator	mc.bowl@sse.com
Address	Unit 1 Harbour Office Wick Caithness KW1 5HA

2. Ongoing Operations

Beatrice Offshore Wind Farm Piling Campaign

Project:	Foundation Piling Campaign
Contractor:	SHL
Contract Purpose:	To install x 4 piles at the two OTM's and each Turbine Location within the construction site.
Area:	BOWL Construction Site: Foundation Locations. (See Fig 5 for details).
Deployment Dates:	01 April 2017 - 31 October 2017.
Deployment Vessel (s):	Stanislav Yudin, Bremen Fighter, Smit Sentosa & Rix Lynx, with various tugs and associated barges.
Equipment:	Pile Installation Frame (PIF), Piling Hammer and Transport barges.

On behalf of BOWL, Seaway Heavy Lifting will deploy various vessels to carry out the aforementioned work during the period 01/04/2017 – 31/10/2017 within the boundary of the BOWL construction site (See Vessel Data Matrix).

In preparation for the installation of wind turbine foundations, in the Beatrice Offshore Windfarm construction site, a set of four piles will be installed in the seabed at each of the foundation locations. On completion, the date will be recorded in Table 1 below. A chart of piled locations will be recorded in Fig 2 below.

Weekly Notice of Operations (WNoO)

Beatrice Offshore Windfarm Limited

Construction Operations

Issue Date: 28th August 2017

LF000005-WNO-013: Weekly Notice of Operations - Rev 16

Beatrice Offshore Wind Farm Jacket Installation Campaign

Project:	Jacket Installation Campaign (See Notice to Mariners) NTM-011
Contractor:	SHL
Contract Purpose:	To install WTG & OTM Jackets at completed piled locations within the construction site.
Area:	BOWL Construction Site: Jacket Locations. (See Fig1, Fig2, Table1.)
Deployment Dates:	08 August 2017 – September 2018.
Deployment Vessel (s):	Oleg Strashnov, Maersk Trader, VOS Prelude, Smit Seraya, Centaurus, Pegasus, Kamarina, Eraclea, President Hubert, Union Sovereign.
Equipment:	HLV equipment, Pile cleaning equipment, Grouting equipment.

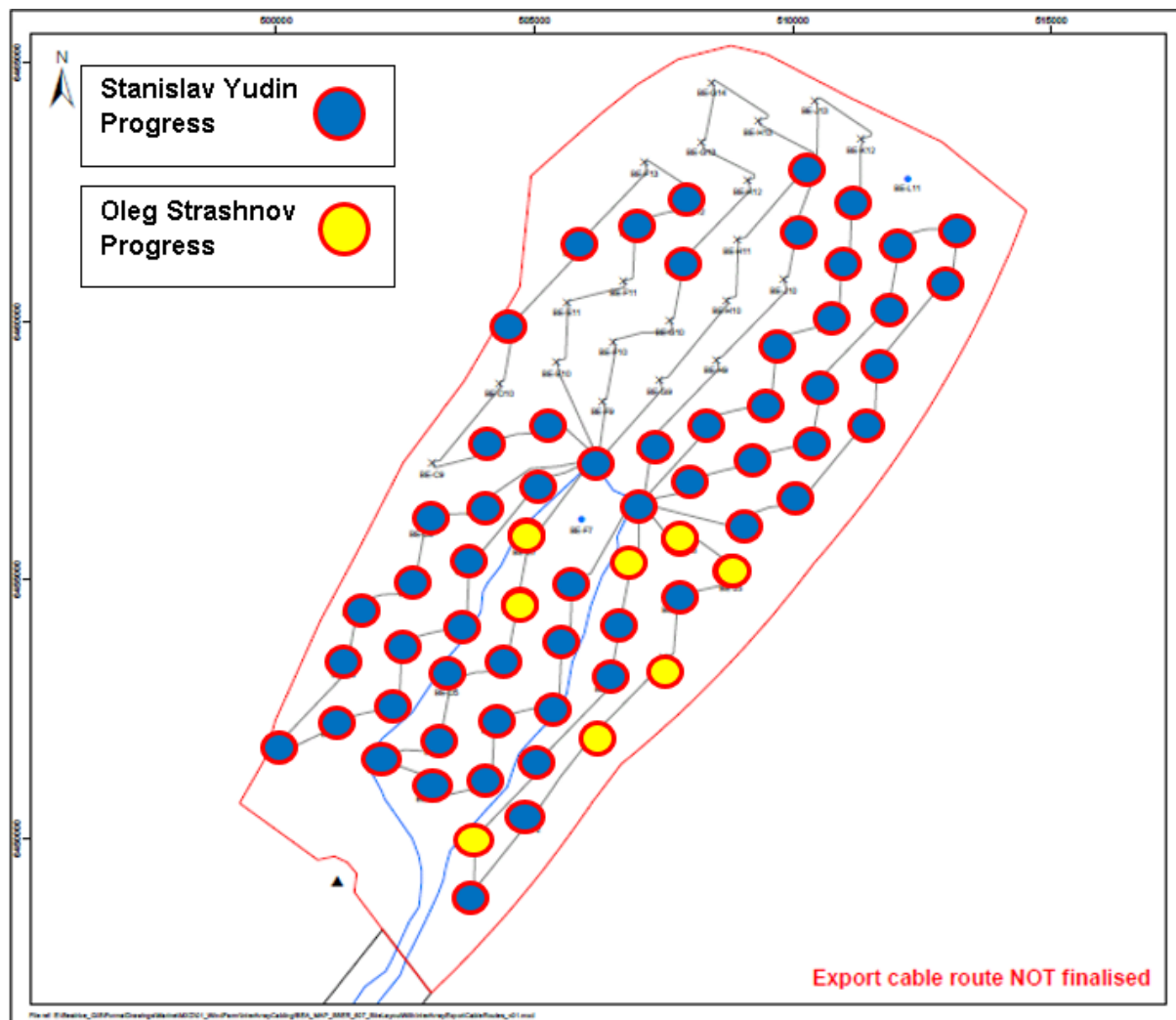


Fig 2 – Piled locations & Installed Jacket locations

Pile installation completed at: 66 Locations

Foundation installation completed at: 8 Locations

Weekly Notice of Operations (WNoO)

Beatrice Offshore Windfarm Limited

Construction Operations



Issue Date: 28th August 2017

LF000005-WNO-013: Weekly Notice of Operations - Rev 16

Table 1 - WTG and OTM Location Coordinates

Location ID	Latitude WGS84	Longitude WGS84	Piling Complete	Jacket installed
BE-A5	58° 12.471' N	002° 59.996' W	14.07.2017	
BE-B5	58° 12.687' N	002° 58.873' W	12.07.2017	
BE-B6	58° 13.308' N	002° 58.664' W	16.06.2017	
BE-B7	58° 13.929' N	002° 58.456' W	18.07.2017	
BE-C4	58° 12.307' N	002° 57.948' W	23.05.2017	
BE-C5	58° 12.902' N	002° 57.749' W	11.07.2017	
BE-C6	58° 13.524' N	002° 57.541' W	10.07.2017	
BE-C7	58° 14.144' N	002° 57.332' W	15.06.2017	
BE-C8	58° 14.766' N	002° 57.124' W	17.07.2017	
BE-C9	58° 15.386' N	002° 56.915' W		
BE-D3	58° 11.995' N	002° 57.002' W	21.05.2017	
BE-D4	58° 12.497' N	002° 56.834' W	22.06.2017	
BE-D5	58° 13.117' N	002° 56.626' W	26.05.2017	
BE-D6	58° 13.739' N	002° 56.417' W	13.06.2017	
BE-D7	58° 14.359' N	002° 56.209' W	31.05.2017	
BE-D8	58° 14.981' N	002° 55.999' W	02.06.17	
BE-D9	58° 15.602' N	002° 55.790' W	16.07.2017	
BE-D10	58° 16.223' N	002° 55.582' W		
BE-D11	58° 16.844' N	002° 55.373' W	13.08.2017	
BE-E1	58° 10.900' N	002° 56.256' W	10.04.2017	
BE-E2	58° 11.470' N	002° 56.128' W	14.04.2017	16.08.2017
BE-E3	58° 12.090' N	002° 55.920' W	19.04.2017	
BE-E4	58° 12.712' N	002° 55.710' W	02.07.2017	
BE-E5	58° 13.333' N	002° 55.502' W	19.05.2017	
BE-E6	58° 13.954' N	002° 55.293' W	18.05.2017	24.08.2017
BE-E7	58° 14.575' N	002° 55.084' W	01.06.2017	25.08.2017
BE-E8	58° 15.196' N	002° 54.875' W	30.05.2017	
BE-E9	58° 15.817' N	002° 54.665' W	15.07.2017	
BE-E10	58° 16.438' N	002° 54.456' W		
BE-E11	58° 17.059' N	002° 54.247' W		
BE-E12	58° 17.680' N	002° 54.037' W	14.08.2017	
BE-F2	58° 11.685' N	002° 55.005' W	03.07.2017	
BE-F3	58° 12.306' N	002° 54.796' W	17.04.2017	
BE-F4	58° 12.927' N	002° 54.588' W	04.07.2017	
BE-F5	58° 13.548' N	002° 54.378' W	17.05.2017	
BE-F6	58° 14.168' N	002° 54.169' W	11.05.2017	
BE-F8 (OTM2)	58° 15.411' N	002° 53.750' W	08.04.2017	
BE-F9	58° 16.031' N	002° 53.540' W		
BE-F10	58° 16.653' N	002° 53.330' W		
BE-F11	58° 17.274' N	002° 53.120' W		
BE-F12	58° 17.894' N	002° 52.911' W	05.07.2017	

Weekly Notice of Operations (WNoO)

Beatrice Offshore Windfarm Limited

Construction Operations



Issue Date: 28th August 2017

LF000005-WNO-013: Weekly Notice of Operations - Rev 16

Location ID	Latitude WGS84	Longitude WGS84	Piling Complete	Jacket installed
BE-F13	58° 18.516' N	002° 52.701' W		
BE-G3	58° 12.544' N	002° 53.726' W	28.05.2017	15.08.2017
BE-G4	58° 13.142' N	002° 53.464' W	17.06.2017	
BE-G5	58° 13.762' N	002° 53.254' W	10.05.2017	
BE-G6	58° 14.384' N	002° 53.044' W	06.05.2017	20.08.2017
BE-G7 (OTM1)	58° 15.004' N	002° 52.834' W	03.04.2017	
BE-G8	58° 15.625' N	002° 52.625' W	07.07.2017	
BE-G9	58° 16.247' N	002° 52.415' W		
BE-G10	58° 16.867' N	002° 52.204' W		
BE-G11	58° 17.488' N	002° 51.994' W	20.08.2017	
BE-G12	58° 18.109' N	002° 51.784' W	18.08.2017	
BE-G13	58° 18.730' N	002° 51.574' W		
BE-G14	58° 19.351' N	002° 51.362' W		
BE-H4	58° 13.356' N	002° 52.339' W	19.06.2017	13.08.2017
BE-H5	58° 13.977' N	002° 52.130' W	20.06.2017	
BE-H6	58° 14.598' N	002° 51.920' W	20.04.2017	21.08.2017
BE-H7	58° 15.219' N	002° 51.709' W	08.07.2017	
BE-H8	58° 15.840' N	002° 51.499' W	06.05.2017	
BE-H9	58° 16.461' N	002° 51.289' W		
BE-H10	58° 17.082' N	002° 51.079' W		
BE-H11	58° 17.703' N	002° 50.867' W		
BE-H12	58° 18.324' N	002° 50.657' W		
BE-H13	58° 18.944' N	002° 50.446' W		
BE-J5	58° 14.192' N	002° 51.005' W	04.05.2017	26.08.2017
BE-J6	58° 14.812' N	002° 50.795' W	21.06.2017	
BE-J7	58° 15.433' N	002° 50.585' W	06.08.2017	
BE-J8	58° 16.055' N	002° 50.373' W	12.06.2017	
BE-J9	58° 16.675' N	002° 50.163' W	04.08.2017	
BE-J10	58° 17.296' N	002° 49.952' W		
BE-J11	58° 17.917' N	002° 49.741' W	26.08.2017	
BE-J12	58° 18.538' N	002° 49.530' W	27.08.2017	
BE-J13	58° 19.159' N	002° 49.319' W		
BE-K6	58° 15.027' N	002° 49.669' W	07.08.2017	
BE-K7	58° 15.648' N	002° 49.459' W	08.08.2017	
BE-K8	58° 16.269' N	002° 49.247' W	31.07.2017	
BE-K9	58° 16.890' N	002° 49.036' W	05.08.2017	
BE-K10	58° 17.510' N	002° 48.825' W		
BE-K11	58° 18.131' N	002° 48.614' W		
BE-K12	58° 18.752' N	002° 48.403' W		
BE-L7	58° 15.862' N	002° 48.333' W	09.08.2017	
BE-L8	58° 16.482' N	002° 48.122' W	25.07.2017	
BE-L9	58° 17.104' N	002° 47.910' W	31.07.2017	
BE-L10	58° 17.724' N	002° 47.698' W	30.07.2017	

Weekly Notice of Operations (WNoO)

Beatrice Offshore Windfarm Limited

Construction Operations



Issue Date: 28th August 2017

LF000005-WNO-013: Weekly Notice of Operations - Rev 16

Location ID	Latitude WGS84	Longitude WGS84	Piling Complete	Jacket installed
BE-M9	58° 17.317' N	002° 46.784' W	27.07.2017	
BE-M10	58° 17.938' N	002° 46.571' W	28.07.2017	

3. Operations Commencing This Week

Pre-Lay Grapnel Run and Route Clearance

The Export cable and OTM Interconnector cable PLGR run will now commence 1st September 2017. Further details will be published next week.

4. Completed Operations

Export Cable Installation Stage 1 – Installation of Direct Cable Pipes at Portgordon

Project:	Export Cable Installation Stage 1 Commences May 2017.
Contractor:	Nexans
Contract Purpose:	Installation of Direct Cable Pipes at Portgordon
Area:	Portgordon near Buckie
Deployment Dates:	EC1 was completed on Monday 10 th July. EC2 works due to commence mid-August 2017 TBC.
Deployment Vessel (s):	N/A
Equipment:	N/A

Installation of Direct Cable Pipe at Portgordon on location EC1 was completed on Monday 10th July. Installation of direct Pipes at Portgordon on location EC2 will commence late August. A Notice to Mariners and updates in Weekly Notice of operations will follow in due time.

Export Cable Installation – Backhoe Works.

Export Cable Backhoe trenching works were completed on Thursday 20th of July 2017. The vessels engaged in the work scope have now left site and demobilised.

Weekly Notice of Operations (WNoO)

Beatrice Offshore Windfarm Limited

Construction Operations

Issue Date: 28th August 2017

LF000005-WNO-013: Weekly Notice of Operations - Rev 16

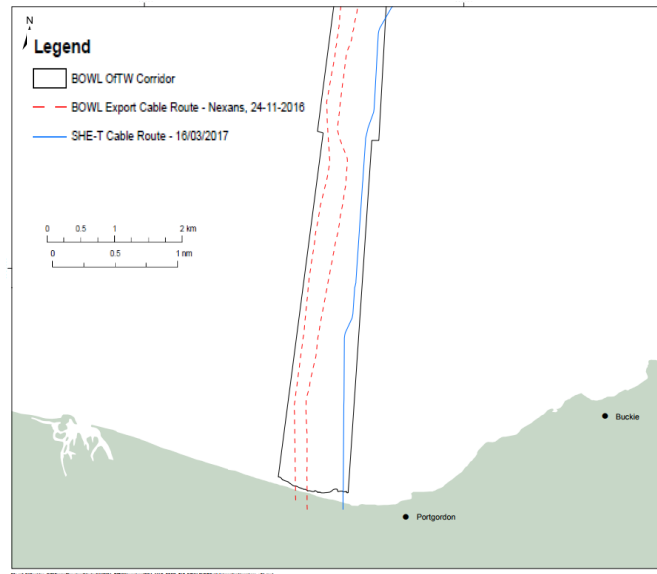


Fig.3 Showing the Export Cable OFTW Corridor and cable routes

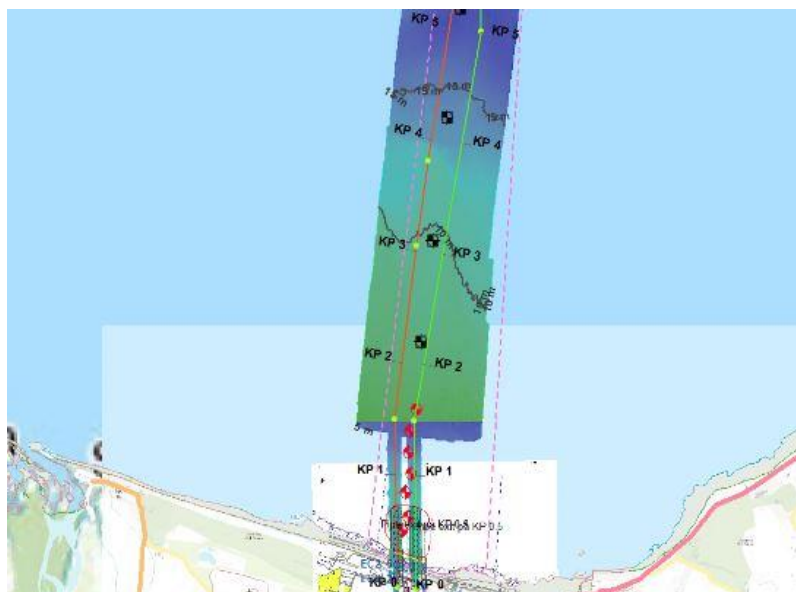


Fig.4 Showing the extent of the backhoe dredging of the Export Cable routes

Vessels are advised to avoid engaging in fishing or laying of static gear in the vicinity of the cable routes. There is a raised berm, in some places >1m above the seabed on either side of the trenches from 400m to 4500m offshore. For specific information please contact Alex Winrow-Giffin at Brown and May (**7. Fisheries Liaison**).

Weekly Notice of Operations (WNoO)

Beatrice Offshore Windfarm Limited

Construction Operations



Issue Date: 28th August 2017

LF000005-WNO-013: Weekly Notice of Operations - Rev 16

Aberdeen University – Installed Seabed Mounted Scientific Equipment

Name	As laid coordinates (WGS84 datum)		Characteristics
40	57° 48.988' N	3° 36.379' W	Subsurface with acoustic release.
41	57° 51.141' N	3° 33.018' W	Subsurface with acoustic release.
44	57° 56.261' N	3° 21.438' W	Subsurface with acoustic release.
46	58° 00.861' N	3° 15.407' W	Subsurface with acoustic release.
47	58° 00.817' N	3° 08.549' W	Subsurface.
48	58° 04.009' N	3° 06.916' W	Subsurface.
49	58° 04.450' N	3° 00.999' W	Subsurface.
54	58° 13.520' N	2° 41.961' W	Subsurface.
56	58° 18.724' N	2° 37.062' W	Subsurface.
82	58° 00.625' N	3° 25.691' W	Subsurface with acoustic release.
90	58° 01.064' N	3° 36.596' W	Subsurface with acoustic release.
98	57° 54.168' N	3° 17.857' W	Subsurface.
99	57° 50.854' N	3° 24.453' W	Subsurface with acoustic release.
110	58° 07.668' N	2° 45.374' W	Subsurface.
146	58° 15.224' N	2° 53.322' W	Subsurface with transponder.
149	58° 16.151' N	2° 51.899' W	Subsurface with transponder.
150	58° 16.755' N	2° 50.970' W	Subsurface with transponder.
159	58° 09.260' N	2° 52.234' W	Subsurface.
163	58° 17.966' N	2° 44.992' W	Subsurface.
165	58° 12.478' N	3° 01.251' W	Subsurface.
175	58° 18.725' N	2° 46.841' W	Subsurface.
178	58° 17.987' N	2° 49.250' W	Subsurface.
179	58° 17.981' N	2° 50.020' W	Subsurface.
180	58° 18.482' N	2° 52.002' W	Subsurface with transponder.
181	58° 19.065' N	2° 51.260' W	Subsurface with transponder.
182	58° 15.000' N	2° 55.733' W	Subsurface with transponder.
183	58° 20.235' N	2° 50.708' W	Subsurface.
184	58° 15.422' N	2° 47.713' W	Subsurface.
185	58° 11.356' N	2° 59.450' W	Subsurface with transponder.
186	57° 50.695' N	3° 39.256' W	Subsurface with acoustic release.
187	57° 56.050' N	3° 45.720' W	Subsurface with acoustic release.
188	57° 55.919' N	3° 53.286' W	Subsurface with acoustic release.
189	57° 59.405' N	3° 48.781' W	Subsurface with acoustic release.
190	58° 07.723' N	3° 07.467' W	Subsurface.
191	58° 16.536' N	2° 46.446' W	Subsurface.
192	58° 12.183' N	3° 26.160' W	Subsurface with acoustic release.

Weekly Notice of Operations (WNoO)

Beatrice Offshore Windfarm Limited

Construction Operations



Issue Date: 28th August 2017

LF000005-WNO-013: Weekly Notice of Operations - Rev 16

193	58° 07.198' N	3° 34.320' W	Subsurface with acoustic release.
194	57° 57.660' N	3° 57.358' W	Subsurface with acoustic release.
195	57° 54.741' N	3° 31.761' W	Subsurface with acoustic release.
196	58° 14.097' N	2° 54.656' W	Subsurface with transponder.
197	58° 12.063' N	2° 57.544' W	Subsurface with transponder.

Mariners are advised that, further to notice UoA/06/2017, and in conjunction with Beatrice Offshore Windfarm Limited (BOWL), the University of Aberdeen has **installed** scientific equipment moorings in the Moray Firth at the locations listed in Table 1 below (see also chart extracts at the foot of this notice)

Moorings support sound recording equipment, and acoustic loggers that record echolocation clicks of dolphins and porpoises (see images of devices at the foot of this notice). All the above moorings are subsurface, consisting of a 50kg weight and a terminated rope riser. The above moorings do not extend more than three metres vertically from the seabed. Twenty-four of the above moorings are also equipped with an acoustic release or transponder.

Mariners are further advised that the following moorings (Table 2) have been **re-installed in their existing location** in the Moray Firth (see also chart extracts at the foot of this notice). Eight of these moorings are also equipped with an acoustic release or transponder:

Table 2.

Name	As laid coordinates (WGS84 datum)		Characteristics
1	57° 41.413' N	3° 58.953' W	Subsurface
2	57° 35.133' N	4° 05.891' W	Surface marked (NB50 buoy, red)
3	57° 44.073' N	3° 19.776' W	Surface marked (dhan, 12' aluminium & RADAR reflector)
4	57° 41.357' N	3° 05.547' W	Surface marked (NB50 buoy, red)
17	57° 57.759' N	3° 31.260' W	Subsurface with acoustic release.
42	57° 52.337' N	3° 29.058' W	Subsurface with acoustic release.
45	57° 57.261' N	3° 16.084' W	Subsurface with acoustic release.
89	57° 56.056' N	3° 38.252' W	Subsurface with acoustic release.
108	58° 18.993' N	2° 59.223' W	Subsurface.
160	58° 17.648' N	2° 49.931' W	Subsurface with transponder.
161	58° 12.933' N	2° 55.954' W	Subsurface with transponder.
162	58° 18.176' N	2° 54.124' W	Subsurface with transponder.
164	58° 12.830' N	2° 51.669' W	Subsurface with transponder.

Mariners should note that the following existing moorings (table 3) **remain in place** in the Moray Firth, as per our Notice to Mariners UoA/05/2017, and in accordance with Marine Licence 05594/15/0 (see also chart extracts at the foot of this notice):

Table 3.

Name	As laid coordinates (WGS84 datum)		Characteristics
64	57° 42.521' N	3° 30.174' W	Surface marked (dhan, 12' aluminium & RADAR reflector)
65	57° 43.485' N	3° 25.174' W	Surface marked (dhan, 12' aluminium & RADAR reflector)
66	57° 43.082' N	3° 14.977' W	Surface marked (dhan, 12' aluminium & RADAR reflector)

Weekly Notice of Operations (WNoO)

Beatrice Offshore Windfarm Limited

Construction Operations

Issue Date: 28th August 2017

LF000005-WNO-013: Weekly Notice of Operations - Rev 16

67	57° 42.069' N	3° 10.026' W	Surface marked (dhan, 12' aluminium & RADAR reflector)
----	---------------	--------------	--

A further Notice to Mariners will be issued when the removed moorings are permanently discontinued.

For information and enquiries please contact:

Tim Candido Barton,

Lighthouse Field Station, University of Aberdeen, George St., Cromarty, Ross-shire, IV11 8YL.

+44 (0)1381 600548.

t.r.barton@abdn.ac.uk



Acoustic logger
(600 x 95mm)

Sound Recorder
(900 x 170mm)

Sound recorder
(200 x 60mm)

Fig.5 Examples of equipment which the above moorings support.

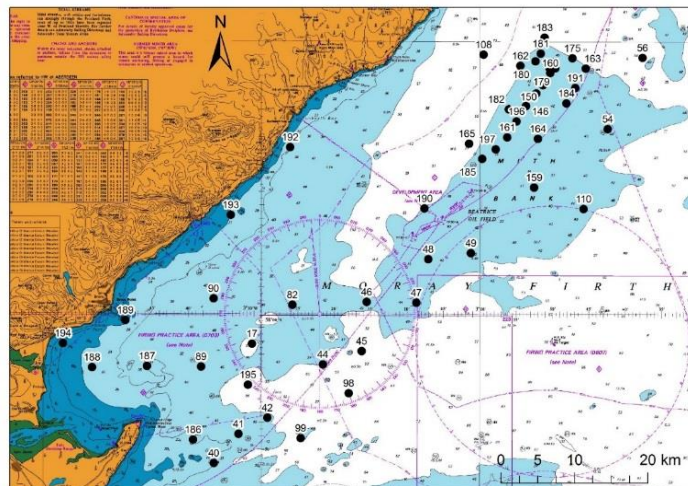


Fig.6 Mooring locations – Moray Firth, excluding sites along the Moray Firth southern shore.

Weekly Notice of Operations (WNoO)

Beatrice Offshore Windfarm Limited

Construction Operations



Issue Date: 28th August 2017

LF000005-WNO-013: Weekly Notice of Operations - Rev 16

2. 50 metres radius around each wind turbine, offshore transformer module and / or their substructure and foundations installed but waiting to be commissioned as part of the Beatrice Offshore Wind Farm.

ALL VESSELS ARE REQUESTED to give all construction and support vessels a wide berth.

MARINERS ARE REMINDED to navigate with caution and keep continued watch on VHF Ch. 70 / 16 when navigating the area.

6. Guard Vessel Deployment

Guard vessels currently on location are Moremma PD135 and Opportune WK171. They can be contacted on VHF Ch.16

Guard vessel Sardonyx BF 206 will relieve Moremma on 29 August.

Project:	Beatrice Offshore Windfarm Guard Vessel Deployment.
Contractor:	SHL – SFF Services Ltd.
Contract Purpose:	Guard Vessel for the Windfarm site.
Area:	BOWL construction site: within the array cable routes and foundation locations. (See Fig 1 for details)
Deployment Dates:	1 st April 2017 – TBC.
Deployment Vessel (s):	Various on a continuous 21 day rotation.
Equipment:	N/A

On behalf of BOWL, Seaways Heavy Lifting has contracted the Scottish Fishermen's Federation to provide guard vessels during the piling and foundation installation campaigns. These vessels will change regularly.

The guard vessel's primary duty is security of the construction site by informing and warning non-construction vessels of the ongoing activities and associated Safety Zones.

7. Fisheries Liaison

Fisheries liaison associated with the activity will be co-ordinated by Brown and May Marine. For any commercial fishery queries please contact: Alex Winrow-Giffin, telephone: +44 (0)1379 872144 and mobile: +44 (0)7760 160039. alex@brownmay.com

8. Distribution List

The distribution of this notice is as per email recipient's header. A central list of recipients is maintained by the Marine Coordinator. If you are not the appropriate recipient of these notices, or do not wish to receive the notices in the future, please contact us at the address included in Section 1 of this notice.

9. Website

The official website of Beatrice Offshore Windfarm Limited can be found at:

<https://www.beatricewind.com/>

This contains all Notices to Mariners (NtM) published by BOWL and all Weekly Notices of Operations, together with a large amount of general information about the Project.

Weekly Notice of Operations (WNoO)

Beatrice Offshore Windfarm Limited

Construction Operations



Issue Date: 28th August 2017

LF000005-WNO-013: Weekly Notice of Operations - Rev 16

There is also a Twitter feed at <https://twitter.com/beatricewind>.

Weekly Notice of Operations (WNoO)

Beatrice Offshore Windfarm Limited

Construction Operations



Issue Date: 28th August 2017

LF000005-WNO-013: Weekly Notice of Operations - Rev 16

Beatrice Offshore Windfarm
Vessels, agents, contractors and sub-contractors

Date: 20-Aug-17

Reference to Marine Licence Conditions
2.5, 2.6 and 3.1.2

Vessel Data Matrix



No Ref	Vessel Picture	Vessel Name / Flag	Type / Function	Operator	Contact / contact details	Call sign / MMSI / IMO	LOA (m) Beam (m) Draft (m)	Date on Site
1		Stanislav Yudin	Heavy Lift Vessel	Seaway Heavy Lifting (SHL)	Danny Sprangers (SHL) C/o Subsea 7 East Campus Amhall Business Park Westhill, Aberdeenshire AB32 6FE +31 653997158 EMAIL:dsprangers@shl.nl	5BYM2 / 210334000	183.3 / 40.0 / 8.9	27.03.2017
2		Bremen Fighter	Anchor Handling Tug assisting the Stanislav Yudin	Seaway Heavy Lifting (SHL)	Danny Sprangers (SHL) C/o Subsea 7 East Campus Amhall Business Park Westhill, Aberdeenshire AB32 6FE +31 653997158 EMAIL:dsprangers@shl.nl	V20Y1 / 304742000	48.1 / 14.06 / 6.0	27.03.2017
3		Smit Sentosa	Anchor Handling Tug assisting the Stanislav Yudin	Seaway Heavy Lifting (SHL)	Danny Sprangers (SHL) C/o Subsea 7 East Campus Amhall Business Park Westhill, Aberdeenshire AB32 6FE +31 653997158 EMAIL:dsprangers@shl.nl	ORRX / 205096000	51.8 / 15.0 / 6.2	27.03.2017
4		Rix Lynx	Crew Transfer Vessel / CTV	Seaway Heavy Lifting (SHL)	Danny Sprangers (SHL) C/o Subsea 7 East Campus Amhall Business Park Westhill, Aberdeenshire AB32 6FE +31 653997158 EMAIL:dsprangers@shl.nl	2JGQ6 / 235115745	26 / 7.0 / 2.0	27.03.2017
5		President Hubert	Anchor Handling Tug	Seaway Heavy Lifting (SHL)	Danny Sprangers (SHL) C/o Subsea 7 East Campus Amhall Business Park Westhill, Aberdeenshire AB32 6FE +31 653997158 EMAIL:dsprangers@shl.nl	ORLD / 205067000	60.0 / 15.0 / 6.40	08.08.2017
6		Union Boxer	Anchor Handling Tug	Seaway Heavy Lifting (SHL)	Danny Sprangers (SHL) C/o Subsea 7 East Campus Amhall Business Park Westhill, Aberdeenshire AB32 6FE +31 653997158 EMAIL:dsprangers@shl.nl	ORPS / 205575000	96.3 / 21.5 / 6.3	01.04.2017
7		Oleg Strashnov	Heavy Lift Vessel / HLV	Seaway Heavy Lifting (SHL)	Danny Sprangers (SHL) C/o Subsea 7 East Campus Amhall Business Park Westhill, Aberdeenshire AB32 6FE +31 653997158 EMAIL:dsprangers@shl.nl	5BNL2 / 212905000	183.3 / 47 / 13.5	08.08.2017

Weekly Notice of Operations (WNoO)

Beatrice Offshore Windfarm Limited

Construction Operations



Issue Date: 28th August 2017

LF000005-WNO-013: Weekly Notice of Operations - Rev 16

8		Union Fighter	Barge Tow Vessel	Seaway Heavy Lifting (SHL)	Danny Sprangers (SHL) C/O Subsea 7 East Campus Amhall Business Park Westhill, Aberdeenshire AB32 6FE +31 653997158 EMAIL: dsprangers@shl.nl	ORPP/205566000	40.6/ 12.7/ 6.3	03.08.2017
9		Smit Seraya	Barge Tow Vessel	Seaway Heavy Lifting (SHL)	Danny Sprangers (SHL) C/O Subsea 7 East Campus Amhall Business Park Westhill, Aberdeenshire AB32 6FE +31 653997158 EMAIL: dsprangers@shl.nl	9V9845/ 566804000/	51.8 x 16 x 6	13.05.2017
10		Opportune WK171	Guard Vessel	Seaway Heavy Lifting (SHL)	Danny Sprangers (SHL) C/O Subsea 7 East Campus Amhall Business Park Westhill, Aberdeenshire AB32 6FE +31 653997158 EMAIL: dsprangers@shl.nl	2WKN / 233608000	24 x 7.2 x 3.8	23.08.2017
11		Moremma PD135	Guard Vessel	Seaway Heavy Lifting (SHL)	Danny Sprangers (SHL) C/O Subsea 7 East Campus Amhall Business Park Westhill, Aberdeenshire AB32 6FE +31 653997158 EMAIL: dsprangers@shl.nl	MKHC6 / 235007170	15.0 x 5.0 x 3.0	17.07.2017
12		Pleiades BF155	Guard Vessel	Seaway Heavy Lifting (SHL)	Danny Sprangers (SHL) C/O Subsea 7 East Campus Amhall Business Park Westhill, Aberdeenshire, AB32 6FE +31 653997158 Email - dsprangers@shl.nl	2BSR7 / 235069008	20 x 5.0	04.08.2017
13		Maersk Trader	Anchor Handler / ROV	Seaway Heavy Lifting (SHL)	Danny Sprangers (SHL) C/O Subsea 7 East Campus Amhall Business Park Westhill, Aberdeenshire, AB32 6FE +31 653997158 Email - dsprangers@shl.nl	OXRO2 / 220584000	73.2m x 20m	08.08.2017
14		VOS Prelude	Supply Vessel	Seaway Heavy Lifting (SHL)	Danny Sprangers (SHL) C/O Subsea 7 East Campus Amhall Business Park Westhill, Aberdeenshire, AB32 6FE +31 653997158 Email - dsprangers@shl.nl	P8ZK / 245969000	73.2m x 20m	08.08.2017
15		Centaurus	Barge Tow Vessel	Seaway Heavy Lifting (SHL)	Danny Sprangers (SHL) C/O Subsea 7 East Campus Amhall Business Park Westhill, Aberdeenshire, AB32 6FE +31 653997158 Email - dsprangers@shl.nl	V2ED3 / 305820000	48.81m x 14.06m	08.08.2017
16		Pegasus	Barge Tow Vessel	Seaway Heavy Lifting (SHL)	Danny Sprangers (SHL) C/O Subsea 7 East Campus Amhall Business Park Westhill, Aberdeenshire, AB32 6FE +31 653997158 Email - dsprangers@shl.nl	V2ED2 / 305389000	48.81m x 14.06m	08.08.2017

Name and Registered Office: Beatrice Offshore Windfarm Limited. One Waterloo Street, Glasgow. G2 6AY

Weekly Notice of Operations (WNoO)

Beatrice Offshore Windfarm Limited

Construction Operations



Issue Date: 28th August 2017

LF000005-WNO-013: Weekly Notice of Operations - Rev 16

17		Kamarina	Barge Tow Vessel	Seaway Heavy Lifting (SHL)	Danny Sprangers (SHL) C/O Subsea 7 East Campus Amhall Business Park Westhill, Aberdeenshire, AB32 6FE +31 653997158 Email - dsprangers@shl.nl	IITW2 / 247278400	50m x 15m	08.08.2017
18		Eraclea	Barge Tow Vessel	Seaway Heavy Lifting (SHL)	Danny Sprangers (SHL) C/O Subsea 7 East Campus Amhall Business Park Westhill, Aberdeenshire, AB32 6FE +31 653997158 Email - dsprangers@shl.nl	IITX2 / 247278500	50m x 15m	08.08.2017
19		Bugsier 10	Barge Tow Vessel	Seaway Heavy Lifting (SHL)	Danny Sprangers (SHL) C/O Subsea 7 East Campus Amhall Business Park Westhill, Aberdeenshire, AB32 6FE +31 653997158 Email - dsprangers@shl.nl	DFWB2 / 218321000	32m x 12.6m	09.08.2017
20		Union Sovereign	Barge Tow Vessel	Seaway Heavy Lifting (SHL)	Danny Sprangers (SHL) C/O Subsea 7 East Campus Amhall Business Park Westhill, Aberdeenshire, AB32 6FE +31 653997158 Email - dsprangers@shl.nl	ORQW / 205644000	67.4m x 15.5m	21.08.2017