

Weekly Notice of Operations (WNoO)

Beatrice Offshore Windfarm Limited

Construction Operations

Issue Date: 17 July 2017

LF000005-WNO-013: Weekly Notice of Operations - Rev 10



Notice of Operations at Beatrice Offshore Wind Farm

Work Planned for the Period 17.07.2017 to 23.07.2017

Construction of the Beatrice Offshore Wind Farm commenced on the 1st of April.

Pre-construction works were completed on the 12th of April. This notice will be updated weekly giving information on the progress and resources involved in the offshore project. The intention is to give an overview of activities and vessels involved. Should anyone have questions regarding the operations, we kindly ask you to put them forward well in advance.

Beatrice Offshore Windfarm Limited (BOWL) is developing the Beatrice Offshore Wind Farm in the 'Outer' Moray Firth on the north-western point of the Smith Bank, approximately 7 nm off the Caithness coastline. The development site will cover an approximate area of up to 130km² and will consist of 84 7MW offshore wind turbines (with a total capacity of 588MW) and two HVAC Offshore Transformer Modules (OTM). Water depths in the area range from approximately 38m below LAT in the south of the field to 60m below LAT in the north. The generated power will be transmitted to the grid via two subsea export / transmission cables with a landfall near Portgordon to the south of the field and grid connection at Blackhillock. The transmission cables will cover a route of approximately 38 nm from the wind farm boundary back to the landfall. The Beatrice Offshore Wind Farm development area is highlighted in red below.

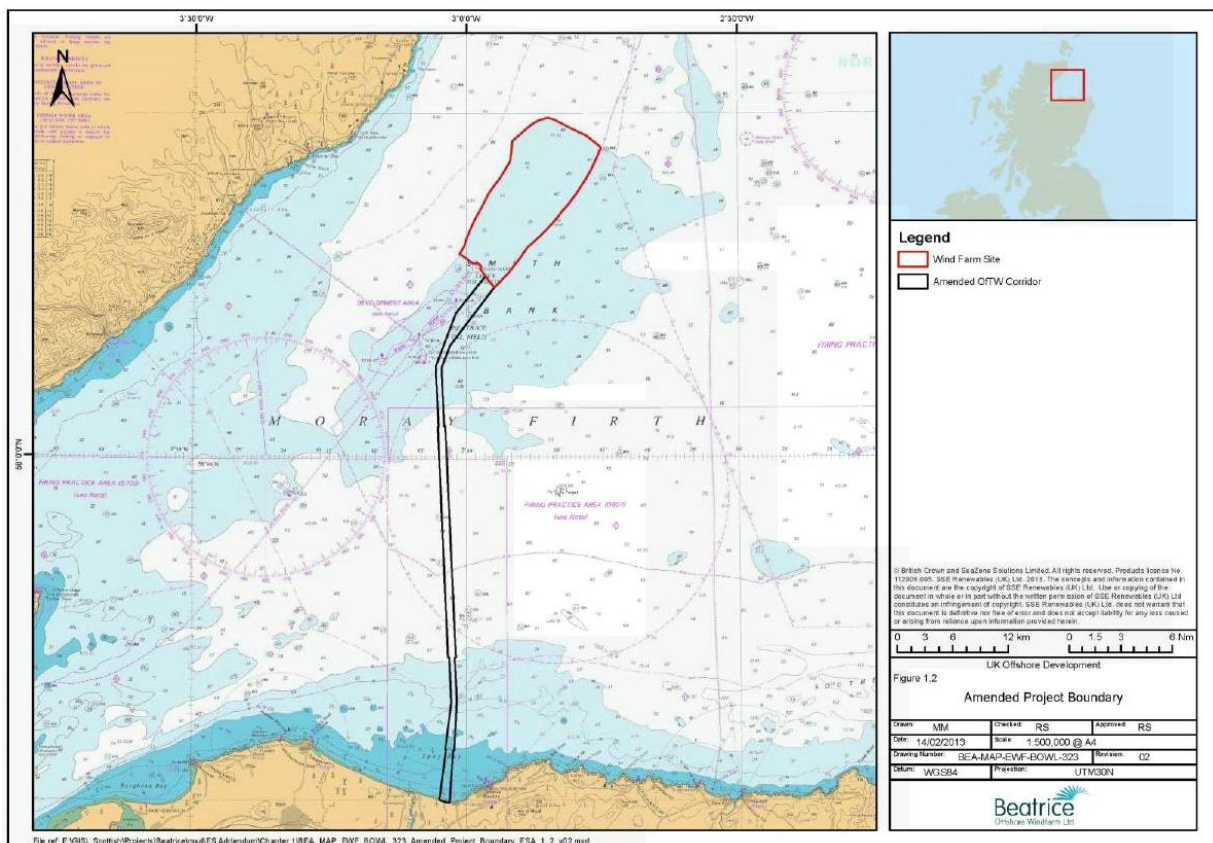


Fig 1 - Beatrice Offshore Wind Farm Location

Weekly Notice of Operations (WNoO)

Beatrice Offshore Windfarm Limited

Construction Operations



Issue Date: 17 July 2017

LF000005-WNO-013: Weekly Notice of Operations - Rev 10

Installation works detailed below are ongoing.

- Piling operations.
- Guard Vessel duties.
- Export cable Installation – Backhoe works.
- Installation & Removal of Seabed Mounted Scientific Equipment

1. Contact Details for Marine Coordination

The following contact can provide more information if required. Please note that specific queries can also be addressed to the relevant vessel or shore based representative.

Telephone Number	+44 (0) 3302 020329
Emergency Contact (24/7)	+44 (0) 7342 028207
Email for Marine Coordinator	mc.bowl@sse.com
Address	Unit 1 Harbour Office Wick Caithness KW1 5HA

2. Ongoing Operations

2.1 Beatrice Offshore Wind Farm Piling Campaign

Project:	Foundation Piling Campaign
Contractor:	SHL
Contract Purpose:	To install x 4 piles at the two OTM's and each Turbine Location within the construction site.
Area:	BOWL Construction Site: Foundation Locations. (See Fig 5 for details).
Deployment Dates:	01 April 2017 - 31 October 2017.
Deployment Vessel (s):	Stanislav Yudin, Bremen Fighter, Smit Sentosa & Rix Lynx, with various tugs and associated barges.
Equipment:	Pile Installation Frame (PIF), Piling Hammer and Transport barges.

On behalf of BOWL, Seaway Heavy Lifting will deploy various vessels to carry out the aforementioned work during the period 01/04/2017 – 31/10/2017 within the boundary of the BOWL construction site (See Vessel Data Matrix).

In preparation for the installation of wind turbine foundations, in the Beatrice Offshore Windfarm construction site, a set of four piles will be installed in the seabed at each of the foundation locations. On completion, the date will be recorded in Table 1 below. A chart of piled locations will be recorded in Fig 2 below.

Weekly Notice of Operations (WNoO)

Beatrice Offshore Windfarm Limited

Construction Operations

Issue Date: 17 July 2017

LF000005-WNO-013: Weekly Notice of Operations - Rev 10

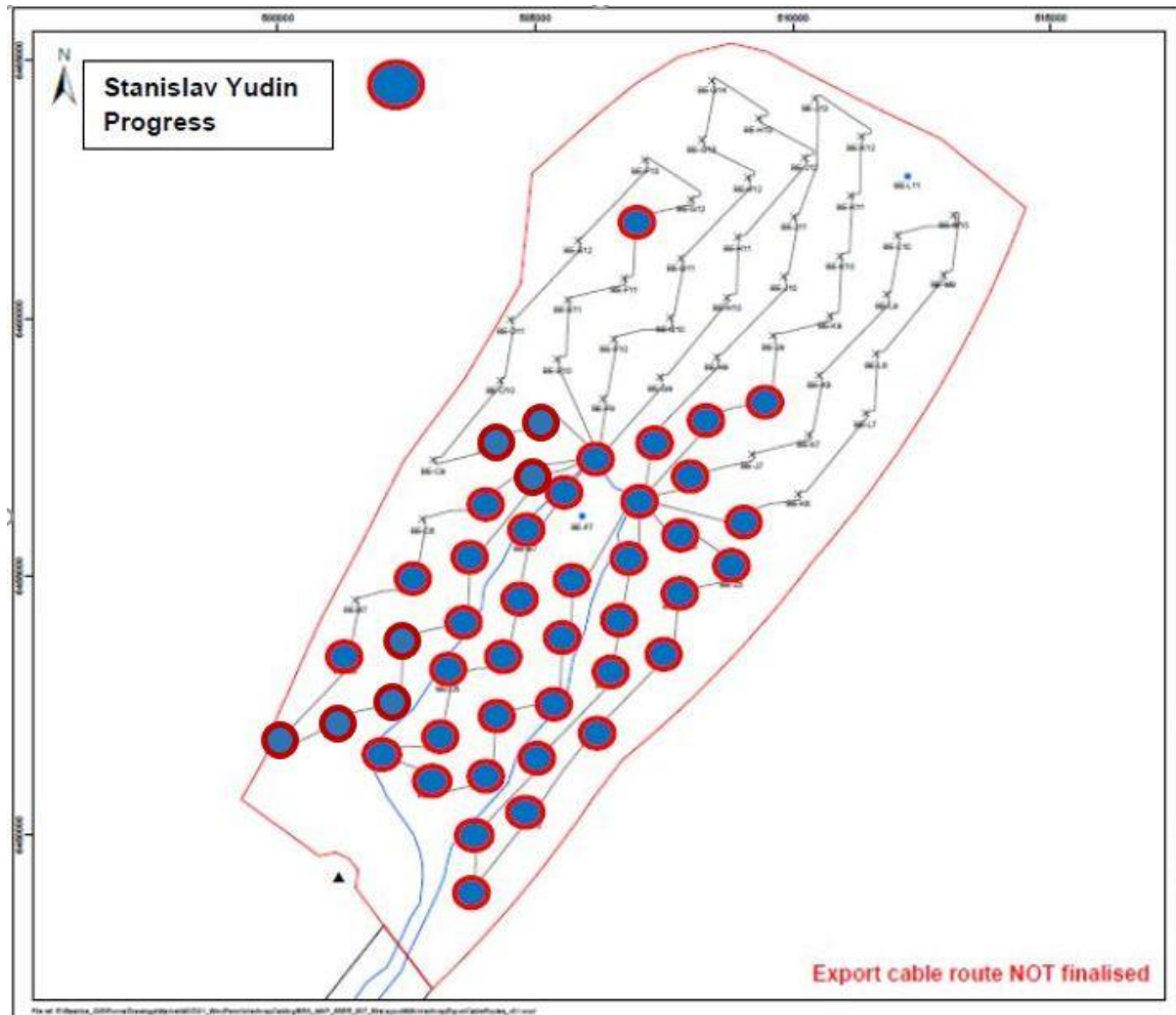


Fig 2 – Piled locations

Table 1 - WTG and OTM Location Coordinates

Location ID	Latitude WGS84	Longitude WGS84	Piling Complete
BE-A5	58 12.471' N	002 59.996' W	14.07.2017
BE-B5	58 12.687' N	002 58.873' W	12.07.2017
BE-B6	58 13.308' N	002 58.664' W	16.06.2017
BE-B7	58 13.929' N	002 58.456' W	
BE-C4	58 12.307' N	002 57.948' W	23.05.2017
BE-C5	58 12.902' N	002 57.749' W	11.07.2017
BE-C6	58 13.524' N	002 57.541' W	10.07.2017
BE-C7	58 14.144' N	002 57.332' W	15.06.2017
BE-C8	58 14.766' N	002 57.124' W	
BE-C9	58 15.386' N	002 56.915' W	
BE-D3	58 11.995' N	002 57.002' W	21.05.2017
BE-D4	58 12.497' N	002 56.834' W	22.06.2017
BE-D5	58 13.117' N	002 56.626' W	26.05.2017

Weekly Notice of Operations (WNoO)

Beatrice Offshore Windfarm Limited

Construction Operations



Issue Date: 17 July 2017

LF000005-WNO-013: Weekly Notice of Operations - Rev 10

Location ID	Latitude WGS84	Longitude WGS84	Piling Complete
BE-D6	58 13.739' N	002 56.417' W	13.06.2017
BE-D7	58 14.359' N	002 56.209' W	31.05.2017
BE-D8	58 14.981' N	002 55.999' W	02.06.17
BE-D9	58 15.602' N	002 55.790' W	16.07.2017
BE-D10	58 16.223' N	002 55.582' W	
BE-D11	58 16.844' N	002 55.373' W	
BE-E1	58 10.900' N	002 56.256' W	10.04.2017
BE-E2	58 11.470' N	002 56.128' W	14.04.2017
BE-E3	58 12.090' N	002 55.920' W	19.04.2017
BE-E4	58 12.712' N	002 55.710' W	02.07.2017
BE-E5	58 13.333' N	002 55.502' W	19.05.2017
BE-E6	58 13.954' N	002 55.293' W	18.05.2017
BE-E7	58 14.575' N	002 55.084' W	01.06.2017
BE-E8	58 15.196' N	002 54.875' W	30.05.2017
BE-E9	58 15.817' N	002 54.665' W	15.07.2017
BE-E10	58 16.438' N	002 54.456' W	
BE-E11	58 17.059' N	002 54.247' W	
BE-E12	58 17.680' N	002 54.037' W	
BE-F2	58 11.685' N	002 55.005' W	03.07.2017
BE-F3	58 12.306' N	002 54.796' W	17.04.2017
BE-F4	58 12.927' N	002 54.588' W	04.07.2017
BE-F5	58 13.548' N	002 54.378' W	17.05.2017
BE-F6	58 14.168' N	002 54.169' W	11.05.2017
BE-F8 (OTM2)	58 15.411' N	002 53.750' W	08.04.2017
BE-F9	58 16.031' N	002 53.540' W	
BE-F10	58 16.653' N	002 53.330' W	
BE-F11	58 17.274' N	002 53.120' W	
BE-F12	58 17.894' N	002 52.911' W	05.07.2017
BE-F13	58 18.516' N	002 52.701' W	
BE-G3	58 12.544' N	002 53.726' W	28.05.2017
BE-G4	58 13.142' N	002 53.464' W	17.06.2017
BE-G5	58 13.762' N	002 53.254' W	10.05.2017
BE-G6	58 14.384' N	002 53.044' W	06.05.2017
BE-G7 (OTM1)	58 15.004' N	002 52.834' W	03.04.2017
BE-G8	58 15.625' N	002 52.625' W	07.07.2017
BE-G9	58 16.247' N	002 52.415' W	
BE-G10	58 16.867' N	002 52.204' W	
BE-G11	58 17.488' N	002 51.994' W	
BE-G12	58 18.109' N	002 51.784' W	
BE-G13	58 18.730' N	002 51.574' W	
BE-G14	58 19.351' N	002 51.362' W	
BE-H4	58 13.356' N	002 52.339' W	19.06.2017
BE-H5	58 13.977' N	002 52.130' W	20.06.2017
BE-H6	58 14.598' N	002 51.920' W	20.04.2017

Weekly Notice of Operations (WNoO)

Beatrice Offshore Windfarm Limited

Construction Operations



Issue Date: 17 July 2017

LF000005-WNO-013: Weekly Notice of Operations - Rev 10

Location ID	Latitude WGS84	Longitude WGS84	Piling Complete
BE-H7	58 15.219' N	002 51.709' W	08.07.2017
BE-H8	58 15.840' N	002 51.499' W	06.05.2017
BE-H9	58 16.461' N	002 51.289' W	
BE-H10	58 17.082' N	002 51.079' W	
BE-H11	58 17.703' N	002 50.867' W	
BE-H12	58 18.324' N	002 50.657' W	
BE-H13	58 18.944' N	002 50.446' W	
BE-J5	58 14.192' N	002 51.005' W	04.05.2017
BE-J6	58 14.812' N	002 50.795' W	21.06.2017
BE-J7	58 15.433' N	002 50.585' W	
BE-J8	58 16.055' N	002 50.373' W	12.06.2017
BE-J9	58 16.675' N	002 50.163' W	
BE-J10	58 17.296' N	002 49.952' W	
BE-J11	58 17.917' N	002 49.741' W	
BE-J12	58 18.538' N	002 49.530' W	
BE-J13	58 19.159' N	002 49.319' W	
BE-K6	58 15.027' N	002 49.669' W	
BE-K7	58 15.648' N	002 49.459' W	
BE-K8	58 16.269' N	002 49.247' W	
BE-K9	58 16.890' N	002 49.036' W	
BE-K10	58 17.510' N	002 48.825' W	
BE-K11	58 18.131' N	002 48.614' W	
BE-K12	58 18.752' N	002 48.403' W	
BE-L7	58 15.862' N	002 48.333' W	
BE-L8	58 16.482' N	002 48.122' W	
BE-L9	58 17.104' N	002 47.910' W	
BE-L10	58 17.724' N	002 47.698' W	
BE-M9	58 17.317' N	002 46.784' W	
BE-M10	58 17.938' N	002 46.571' W	

3. Beatrice Offshore Wind Farm Guard Vessel Deployment

Project:	Beatrice Offshore Windfarm Guard Vessel Deployment.
Contractor:	SHL – SFF Services Ltd.
Contract Purpose:	Guard Vessel for the Windfarm site.
Area:	BOWL construction site: within the array cable routes and foundation locations. (See Fig 1 for details)
Deployment Dates:	17 th July 2017.
Deployment Vessel (s):	Atlas FR101 to be relieved by Moremma PD135 at midnight 17 th July.
Equipment:	N/A

On behalf of BOWL, Seaways Heavy Lifting has contracted the Scottish Fishermen's Federation to provide guard vessels during the piling and foundation installation campaigns. These vessels will change regularly, however apart from times of extreme weather, there will always be at least one guard

Weekly Notice of Operations (WNoO)

Beatrice Offshore Windfarm Limited

Construction Operations

Issue Date: 17 July 2017

LF000005-WNO-013: Weekly Notice of Operations - Rev 10

vessel on station. The guard vessel's primary duty is security of the construction site by informing and warning non-construction vessels of the ongoing activities and associated Safety Zones.

The Guard Vessel Moremma PD135 assumes duties from midnight on the 17th July.

Moremma PD135	
General Description and Dimensions	Guard Vessel: L:15.0m B:5.0m D: 3.0m
Call Sign:	MKHC6
MMSI:	235007170
On Board Contact:	TBC
E-mail:	ops@sff.co.uk
Onshore Representative:	SFF Services Limited Office. Tel: 01224 646966



4. Export Cable Installation Stage 1 – Installation of Direct Cable Pipes at Portgordon

Project:	Export Cable Installation Stage 1 Commences May 2017.
Contractor:	Nexans
Contract Purpose:	Installation of Direct Cable Pipes at Portgordon
Area:	Portgordon near Buckie
Deployment Dates:	EC1 was completed on Monday 10 th July. EC2 works due to commence mid-August 2017.
Deployment Vessel (s):	N/A
Equipment:	N/A

Installation of Direct Cable Pipes at Portgordon on location EC1 was completed on Monday 10th July. Installation of direct Pipes at Portgordon on location EC2 will commence in mid August and Notice to Mariners and updates in Weekly Notice of operations will follow in due time.

Weekly Notice of Operations (WNoO)

Beatrice Offshore Windfarm Limited

Construction Operations

Issue Date: 17 July 2017

LF000005-WNO-013: Weekly Notice of Operations - Rev 10

5. Export Cable Installation – Backhoe Works.

BOWL intends to install 2 offshore export cables from the offshore windfarm to land via Portgordon Beach. Pre-installed horizontal cable pipes require to be installed from the shoreline to an offshore exit point. At the exit points approximately 420-450m offshore and out along the two cable routes to around 4.5km will be trenched to a depth of 2m. Large boulders encountered along the route may also be side casted. During this period, the dredging barge Manu Pekka will be working along the route 24/7, with the BKM103 used as support vessel. The Norsemaid will also perform survey and crew transfer operations.


General Safety Advice

All vessels engaged in the activity will exhibit appropriate lights and shapes prescribed by the International Regulations for Preventing Collisions at Sea; relative to their operations. All vessels engaged in the activity will also transmit an Automatic Identification System (AIS) message as necessary.

ALL VESSELS ARE REQUESTED to give the barge “Manu Pekka” and support vessels a wide berth and observe a safe passing distance of at least 500 metres at all times.

5.1 Vessels Associated with the Activity

The vessels that are involved with the described operation are the Barge Manu Pekka, the multicat tug BKM103 and the survey vessel the Norsemaid.

Manu Pekka	
General Description and Dimensions	Hull Dredger L : 47.9 / B : 15 / D :3.0
Call Sign:	5BJH2
MMSI:	212701000
On Board Contact:	N/A
E-mail:	N/A
Onshore Representative:	Øyvind Haug BEATRICE Installation Engineering Manager Mob: +47 916 27 674 Office: +47 22 88 65 09
	


Weekly Notice of Operations (WNoO)


Beatrice Offshore Windfarm Limited

Construction Operations

Issue Date: 17 July 2017

LF000005-WNO-013: Weekly Notice of Operations - Rev 10

BMK 103	
General Description and Dimensions	Multicat Tug L : 26.5 / B : 11.8 / D : 3.85
Call Sign:	5BFL2
MMSI:	212492000
On Board Contact:	N/A
E-mail:	N/A
Onshore Representative:	Øyvind Haug BEATRICE Installation Engineering Manager Mob: +47 916 27 674 Office: +47 22 88 65 09
	

Norsemaid	
General Description and Dimensions	Survey/Crew Change L : 23.5 / B : 5.1 / D : 2.9
Call Sign:	VQEB2
MMSI:	235007967
On Board Contact:	N/A
E-mail:	N/A
Onshore Representative:	Øyvind Haug BEATRICE Installation Engineering Manager Mob: +47 916 27 674 Office: +47 22 88 65 09
	

Weekly Notice of Operations (WNoO)

Beatrice Offshore Windfarm Limited

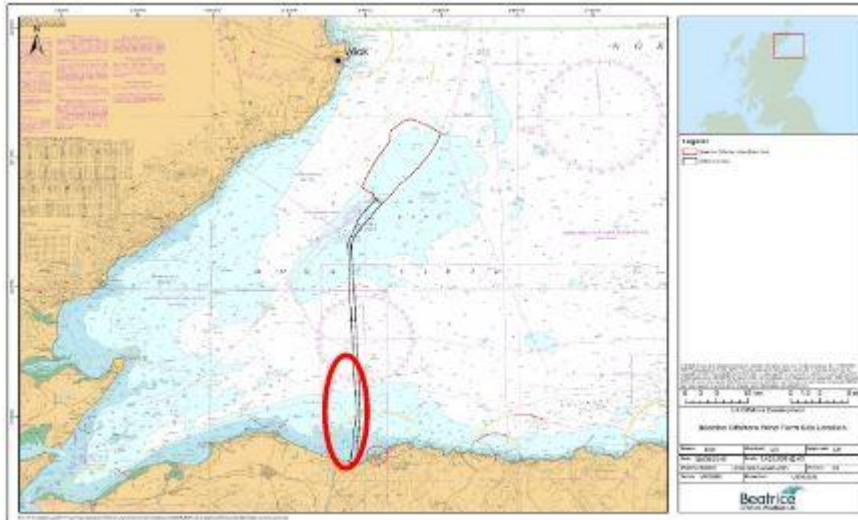
Construction Operations

Issue Date: 17 July 2017

LF000005-WNO-013: Weekly Notice of Operations - Rev 10

5.2 Area of Planned Activity

Portgordon, near Buckie starting offshore approximately 420-450m continuing 4.5km offshore from Portgordon Beach



Weekly Notice of Operations (WNoO)

Beatrice Offshore Windfarm Limited

Construction Operations



Issue Date: 17 July 2017

LF000005-WNO-013: Weekly Notice of Operations - Rev 10

6. Aberdeen University - Installation & Removal of Seabed Mounted Scientific Equipment

Mariners are advised that, further to notice UoA/05/2017 and in conjunction with Beatrice Offshore Windfarm Limited (BOWL), the University of Aberdeen intends to **install** scientific equipment moorings in the Moray Firth at the locations listed in table 1, below (see also chart extracts at the foot of this notice):

Table 1.

Name	Proposed coordinates (WGS84 datum)		Characteristics
40	57° 48.984' N	3° 36.382' W	Subsurface with acoustic release.
41	57° 51.154' N	3° 33.048' W	Subsurface with acoustic release.
44	57° 56.416' N	3° 21.417' W	Subsurface with acoustic release.
46	58° 00.858' N	3° 15.396' W	Subsurface with acoustic release.
47	58° 00.816' N	3° 08.539' W	Subsurface.
48	58° 04.006' N	3° 06.914' W	Subsurface.
49	58° 04.449' N	3° 00.998' W	Subsurface.
54	58° 13.517' N	2° 41.969' W	Subsurface.
56	58° 18.725' N	2° 37.063' W	Subsurface.
82	58° 00.621' N	3° 25.692' W	Subsurface with acoustic release.
90	58° 01.061' N	3° 36.584' W	Subsurface with acoustic release.
98	57° 54.165' N	3° 17.854' W	Subsurface with acoustic release.
99	57° 50.856' N	3° 24.445' W	Subsurface with acoustic release.
110	58° 07.667' N	2° 45.368' W	Subsurface.
146	58° 15.231' N	2° 53.321' W	Subsurface.
149	58° 16.020' N	2° 52.110' W	Subsurface with transponder.
150	58° 16.782' N	2° 50.982' W	Subsurface with transponder.
159	58° 09.262' N	2° 52.228' W	Subsurface.
163	58° 17.960' N	2° 44.988' W	Subsurface with transponder.
165	58° 12.471' N	3° 01.260' W	Subsurface.
175	58° 18.720' N	2° 46.860' W	Subsurface.
178	58° 17.976' N	2° 49.200' W	Subsurface with transponder.
179	58° 17.976' N	2° 50.016' W	Subsurface with transponder.
180	58° 18.492' N	2° 52.002' W	Subsurface with transponder.
181	58° 19.068' N	2° 51.264' W	Subsurface with transponder.
182	58° 14.997' N	2° 55.728' W	Subsurface.
183	58° 20.210' N	2° 50.580' W	Subsurface.
184	58° 15.360' N	2° 47.660' W	Subsurface with transponder.
185	58° 11.351' N	2° 59.448' W	Subsurface.
186	57° 50.700' N	3° 39.240' W	Subsurface with acoustic release.
187	57° 56.040' N	3° 45.720' W	Subsurface with acoustic release.
188	57° 55.920' N	3° 53.280' W	Subsurface with acoustic release.
189	57° 59.400' N	3° 48.780' W	Subsurface with acoustic release.

Weekly Notice of Operations (WNoO)

Beatrice Offshore Windfarm Limited

Construction Operations



Issue Date: 17 July 2017

LF000005-WNO-013: Weekly Notice of Operations - Rev 10

190	58° 07.740' N	3° 07.320' W	Subsurface.
191	58° 16.530' N	2° 46.440' W	Subsurface.
192	58° 12.180' N	3° 26.160' W	Subsurface with acoustic release.
193	58° 07.200' N	3° 34.320' W	Subsurface with acoustic release.
194	57° 57.660' N	3° 57.360' W	Subsurface with acoustic release.
195	57° 54.720' N	3° 31.740' W	Subsurface with acoustic release.
196	58° 14.100' N	2° 54.660' W	Subsurface.
197	58° 12.060' N	2° 57.540' W	Subsurface.

The moorings support sound recording equipment, and acoustic loggers that record echolocation clicks of dolphins and porpoises (see images of devices at the foot of this notice). All the above moorings will be subsurface, consisting of a 50kg weight and a terminated rope riser. The above moorings will not extend more than three metres vertically from the seabed. Twenty-four of the above moorings will also be equipped with an acoustic release or transponder.

Mariners are further advised that the following moorings (table 2) will be serviced and **re-installed in their existing location** in the Moray Firth (see also chart extracts at the foot of this notice). Eight of these moorings will also be equipped with an acoustic release or transponder:

Table 2.

Name	As laid coordinates (WGS84 datum)		Characteristics
1	57° 41.411' N	3° 58.943' W	Subsurface
2	57° 35.133' N	4° 05.891' W	Surface marked (NB50 buoy, red)
3	57° 44.083' N	3° 19.783' W	Surface marked (dhan, 12' aluminium & RADAR reflector)
4	57° 41.386' N	3° 05.595' W	Surface marked (NB50 buoy, red)
17	57° 57.759' N	3° 31.258' W	Subsurface with acoustic release.
42	57° 52.338' N	3° 29.066' W	Subsurface with acoustic release.
45	57° 57.261' N	3° 16.063' W	Subsurface with acoustic release.
89	57° 56.051' N	3° 38.250' W	Subsurface with acoustic release.
108	58° 18.995' N	2° 59.233' W	Subsurface.
160	58° 17.658' N	2° 49.920' W	Subsurface with transponder.
161	58° 13.005' N	2° 55.956' W	Subsurface with transponder.
162	58° 18.195' N	2° 54.113' W	Subsurface with transponder.
164	58° 12.831' N	2° 51.691' W	Subsurface with transponder.

Weekly Notice of Operations (WNoO)

Beatrice Offshore Windfarm Limited

Construction Operations

Issue Date: 17 July 2017


LF000005-WNO-013: Weekly Notice of Operations - Rev 10

Mariners should note that the following existing moorings (table 3) will **remain in place** in the Moray and Cromarty Firths, as per our Notice to Mariners UoA/05/2017, and in accordance with marine licence 05594/15/0 (see also chart extracts at the foot of this notice):

Table 3.

Name	As laid coordinates (WGS84 datum)		Characteristics
64	57° 42.521' N	3° 30.174' W	Surface marked (dhan, 12' aluminium & RADAR reflector)
65	57° 43.485' N	3° 25.174' W	Surface marked (dhan, 12' aluminium & RADAR reflector)
66	57° 43.082' N	3° 14.977' W	Surface marked (dhan, 12' aluminium & RADAR reflector)
67	57° 42.069' N	3° 10.026' W	Surface marked (dhan, 12' aluminium & RADAR reflector)

All works will be carried out by Moray First Marine Ltd., using the vessel "Coral Wind" (see below). Works will commence w/c 10th July, subject to weather and progress of BOWL piling operations.

Coral Wind	
General Description and Dimensions:	Workboat, UK MCA Cat.2, 60nm from safe haven LOA 14m, Beam 5.1m, Draft 1.2m
Call sign:	2EMX8
MMSI:	235086491
On Board Contact:	Bill Ruck, 07775 802963
E-mail:	bill@moraymarine.com
	

A further Notice to Mariners will be issued when the removed moorings are permanently discontinued.

For information and enquiries please contact:

Tim Candido Barton,

Lighthouse Field Station, University of Aberdeen, George St., Cromarty, Ross-shire, IV11 8YL.

+44 (0)1381 600548.

t.r.barton@abdn.ac.uk

Weekly Notice of Operations (WNoO)

Beatrice Offshore Windfarm Limited

Construction Operations

Issue Date: 17 July 2017

LF000005-WNO-013: Weekly Notice of Operations - Rev 10



Acoustic logger
(600 x 95mm)



Sound Recorder
(900 x 170mm)



Sound recorder
(200 x 60mm)

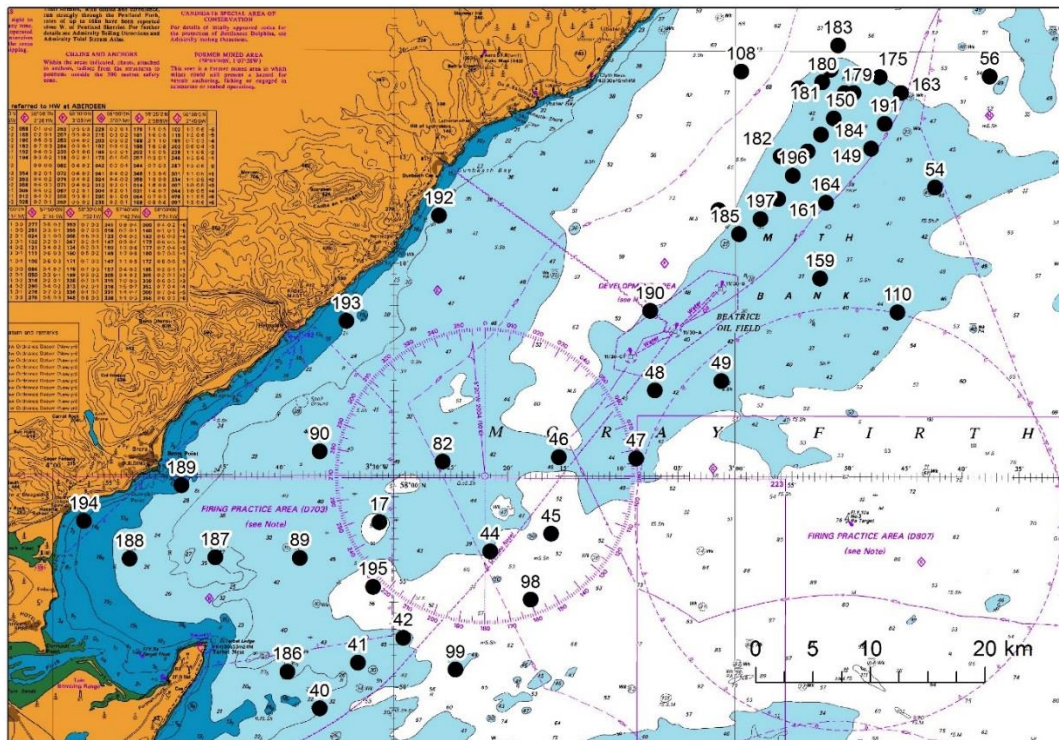
Examples of equipment which the above moorings support.

Weekly Notice of Operations (WNoO)

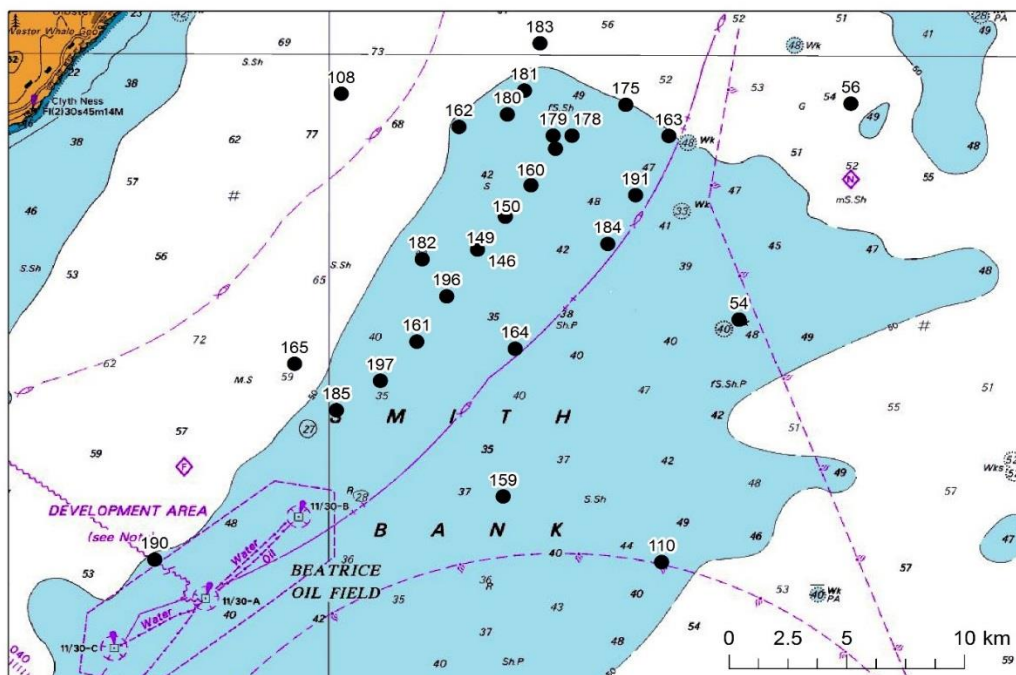
Beatrice Offshore Windfarm Limited Construction Operations

Issue Date: 17 July 2017

LF000005-WNO-013: Weekly Notice of Operations - Rev 10



Mooring locations – Moray Firth, excluding sites along the Moray Firth southern shore.



Mooring locations – detail of Smith Bank sites, Moray Firth.

Weekly Notice of Operations (WNoO)

Beatrice Offshore Windfarm Limited

Construction Operations



Issue Date: 17 July 2017

LF000005-WNO-013: Weekly Notice of Operations - Rev 10

7. General Safety Advice

All vessels engaged in the activity will exhibit appropriate lights and shapes prescribed by the International Regulations for Preventing Collisions at Sea; relative to their operations. All vessels engaged in the activity will also transmit an Automatic Identification System (AIS) message.

The Secretary of State has authorised the use of the following safety zones as per Notice to Mariners LF000005-NTM-004.

1. 500 metres radius around each wind turbine, offshore transformer module and / or their substructures and foundations comprising the Beatrice Offshore Wind Farm whilst work is being performed as indicated by the presence of construction vessels.
2. 50 metres radius around each wind turbine, offshore transformer module and / or their substructure and foundations installed but waiting to be commissioned as part of the Beatrice Offshore Wind Farm.

ALL VESSELS ARE REQUESTED to give all construction and support vessels a wide berth.

MARINERS ARE REMINDED to navigate with caution and keep continued watch on VHF Ch. 70 / 16 when navigating the area.

8. Dedicated Guard Vessel

Guard Vessel Atlas FR101 will be relieved by the GV Moremma PD135 and will assume duties from midnight on the 17th July 2017.

Guard Vessels can be contacted on VHF Ch16 and Ch13

9. Fisheries Liaison

Fisheries liaison associated with the activity will be co-ordinated by Brown and May Marine. For any commercial fishery queries please contact: Alex Winrow-Giffin, telephone: +44 (0)1379 872144 and mobile: +44 (0)7760 160039.

10. Distribution List

The distribution of this notice is as per email recipient's header. A central list of recipients is maintained by the Marine Coordinator; if you are not the appropriate recipient of these notices, or do not wish to receive the notices in the future, please contact us at the address included in Section 1 of this notice.

11. Website

The official website of Beatrice Offshore Windfarm Limited can be found at:

<https://www.beatricewind.com/>

This contains all Notices to Mariners (NtM) published by BOWL and all Weekly Notices of Operations, together with a large amount of general information about the Project.

There is also a Twitter feed at <https://twitter.com/beatricewind>.

Weekly Notice of Operations (WNoO)

Beatrice Offshore Windfarm Limited

Construction Operations



Issue Date: 17 July 2017

LF000005-WNO-013: Weekly Notice of Operations - Rev 10

Reference to Marine Licence
Conditions 2.5, 2.6 and 3.1.2

Vessel Data Matrix



No Ref	Vessel Picture	Vessel Name / Flag	Type / Function	Operator	Contact / contact details	Call sign / MMSI / IMO	LOA (m) Beam (m) Draft (m)	Date on Site
1		Bremen Fighter	Anchor Handling Tug assisting the Stanislav Yudin	Seaway Heavy Lifting (SHL)	Danny Sprangers (SHL) C/o Subsea 7 East Campus Amhall Business Park Westhill, Aberdeenshire AB32 6FE +31 653997158 EMAIL: dsprangers@shl.nl	V20Y1 / 304742000	48.1 / 14.06 / 6.0	27.03.2017
2		Stanislav Yudin	Heavy Lift Vessel	Seaway Heavy Lifting (SHL)	Danny Sprangers (SHL) C/o Subsea 7 East Campus Amhall Business Park Westhill, Aberdeenshire AB32 6FE +31 653997158 EMAIL: dsprangers@shl.nl	5BYM2 / 210334000	183.3 / 40.0 / 8.9	27.03.2017
3		Smit Sentosa	Anchor Handling Tug assisting the Stanislav Yudin	Seaway Heavy Lifting (SHL)	Danny Sprangers (SHL) C/o Subsea 7 East Campus Amhall Business Park Westhill, Aberdeenshire AB32 6FE +31 653997158 EMAIL: dsprangers@shl.nl	ORRX / 205696000	51.8 / 15.0 / 6.2	27.03.2017
4		Rix Lynx	Crew Transfer Vessel / CTV	Seaway Heavy Lifting (SHL)	Danny Sprangers (SHL) C/o Subsea 7 East Campus Amhall Business Park Westhill, Aberdeenshire AB32 6FE +31 653997158 EMAIL: dsprangers@shl.nl	2JGQ6 / 235115745	26 / 7.0 / 2.0	27.03.2017
5		Union Boxer	Barge Tow Vessel	Seaway Heavy Lifting (SHL)	Danny Sprangers (SHL) C/o Subsea 7 East Campus Prospect Road Amhall Business Park Westhill, Aberdeenshire AB32 6FE +31 653997158 EMAIL: dsprangers@shl.nl	ORPS / 205575000	40.6/ 21.6/ 6.3	01.04.2017
6		Union Princess	Barge Tow Vessel	Seaway Heavy Lifting (SHL)	Danny Sprangers (SHL) C/o Subsea 7 East Campus Amhall Business Park Westhill, Aberdeenshire AB32 6FE +31 653997158 EMAIL: dsprangers@shl.nl	ORQU/205642000	67/ 16/ 6.2	16.04. 2017
7		Smit Seraya	Barge Tow Vessel	Seaway Heavy Lifting (SHL)	Danny Sprangers (SHL) C/o Subsea 7 East Campus Amhall Business Park Westhill, Aberdeenshire AB32 6FE +31 653997158 EMAIL: dsprangers@shl.nl	9V9845/ 566804000	51.8 x 16 x 6	13.05.2017
8		Atlas FR101	Guard Vessel	Seaway Heavy Lifting (SHL)	Danny Sprangers (SHL) C/o Subsea 7 East Campus Amhall Business Park Westhill, Aberdeenshire AB32 6FE +31 653997158 EMAIL: dsprangers@shl.nl	MPUD3	20.0 x 5.0 x 4.5	28.06.2017
9		Moremma PD 135	Guard Vessel	Seaway Heavy Lifting (SHL)	Danny Sprangers (SHL) C/o Subsea 7 East Campus Amhall Business Park Westhill, Aberdeenshire AB32 6FE +31 653997158 EMAIL: dsprangers@shl.nl	MKHC6	15.0 x 5.0 x 3.0	17.07.2017

Weekly Notice of Operations (WNoO)

Beatrice Offshore Windfarm Limited

Construction Operations



Issue Date: 17 July 2017

LF000005-WNO-013: Weekly Notice of Operations - Rev 10

Beatrice Offshore Windfarm




Vessels, agents, contractors and sub-contractors

Date: 15-Jul-17

Reference to Marine Licence
Conditions 2.5, 2.6 and 3.1.2

Vessel Data Matrix for Buckie



No Ref	Vessel Picture	Vessel Name / Flag	Type / Function	Vessel Contact / Master's name	Company Name / Contact / contact details	Call sign / MMSI / IMO	LOA (m) Beam (m) Draft (m)	Date on Site
4		Norsemaid	Survey/Crew Transfer Vessel	Hilde Schonewille Project Manager Energy Division M: +31 (0)6 51605202 hilde.schonewille@boskalis.com	Hilde Schonewille Project Manager Energy Division M: +31 (0)6 51605202 hilde.schonewille@boskalis.com	VQEB2, 235007967	L: 23.2/ B: 5.1/ D: 2.9.	1st June 2017
5		Manu Pekka	Hull Dredger	Hilde Schonewille Project Manager Energy Division M: +31 (0)6 51605202 hilde.schonewille@boskalis.com	Hilde Schonewille Project Manager Energy Division M: +31 (0)6 51605202 hilde.schonewille@boskalis.com	5BJH2, 212701000	L: 47.9/ B: 15.0/ D: 3.0.	1st June 2017
6		BKM 103	Multicat Tug	Hilde Schonewille Project Manager Energy Division M: +31 (0)6 51605202 hilde.schonewille@boskalis.com	Hilde Schonewille Project Manager Energy Division M: +31 (0)6 51605202 hilde.schonewille@boskalis.com	5BFL2, 212492000	L: 26.5/ B: 11.8/ D: 3.85	1st June 2017

Weekly Notice of Operations (WNoO)

Beatrice Offshore Windfarm Limited

Construction Operations

Issue Date: 17 July 2017

LF000005-WNO-013: Weekly Notice of Operations - Rev 10

