

Weekly Notice of Operations (WNoO)

Beatrice Offshore Windfarm Limited

Construction Operations



Issue Date: 21st October 2019

LF000005-WNO-013: Weekly Notice of Operations - Rev 128

Notice of Operations at Beatrice Offshore Wind Farm

Work Planned for the Period 21.10.2019 to 27.10.2019

Construction of the Beatrice Offshore Wind Farm commenced on the 1st of April 2017. This notice will be updated weekly giving information on the progress and resources involved in the offshore project. The intention is to give an overview of activities and vessels involved. Should anyone have questions regarding the operations, we kindly ask you to put them forward well in advance.

Beatrice Offshore Windfarm Limited (BOWL) is developing the Beatrice Offshore Wind Farm in the 'Outer' Moray Firth on the north-western point of the Smith Bank, approximately 7 nm off the Caithness coastline. The development site will cover an approximate area of up to 130km² and will consist of 84 7MW offshore wind turbines (with a total capacity of 588MW) and two HVAC Offshore Transformer Modules (OTM). Water depths in the area range from approximately 38m below LAT in the south of the field to 60m below LAT in the north. The generated power will be transmitted to the grid via two subsea export / transmission cables with a landfall near Portgordon to the south of the field and grid connection at Blackhillock. The transmission cables cover a route of approximately 38 nm from the wind farm boundary back to the landfall. The Beatrice Offshore Wind Farm development area is highlighted in red below, the OFTW cable corridor in black.

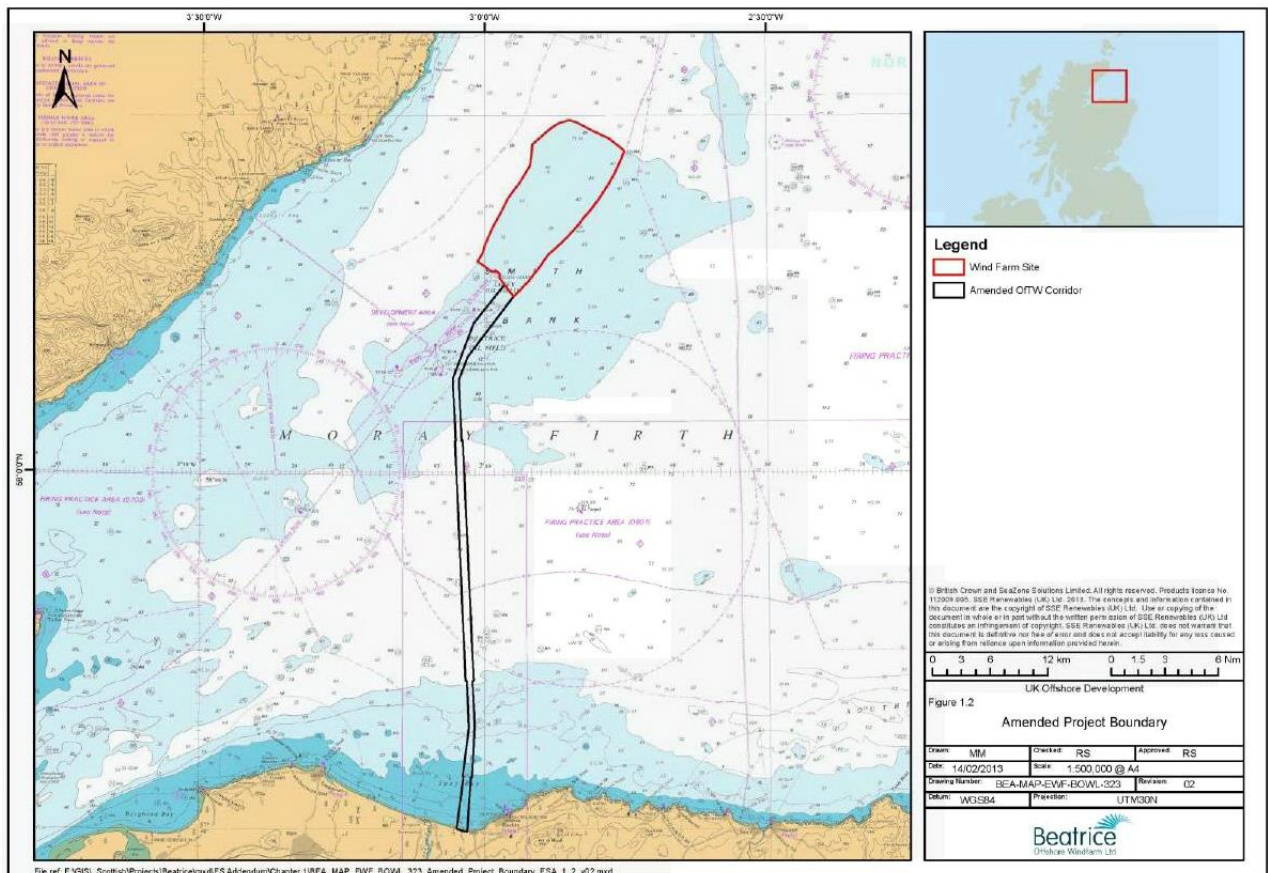


Fig. 1 Beatrice Offshore Wind Farm Location

Weekly Notice of Operations (WNoO)

Beatrice Offshore Windfarm Limited

Construction Operations

Issue Date: 21st October 2019

LF000005-WNO-013: Weekly Notice of Operations - Rev 128

1. Contact Details for Marine Coordination

The following contact can provide more information if required. Please note that specific queries can also be addressed to the relevant vessel or shore based representative.

Telephone Number	+44 (0) 3302 020329
Emergency Contact (24/7)	+44 (0) 7342 028207
Email for Marine Coordinator	mc.bowl@sse.com
Address	Grey Coast Building, Harbour Quay, Wick Caithness KW1 5ET

2. Ongoing Operations

2.1 Foundations – Maintenance & Remedial Operations

Seaway 7's maintenance programme on foundations continues utilising the crew transfer vessel Dalby Ribble. The Offshore Support Vessel Seaway Moxie will support operations using their Uptime gangway walk to work system.

Seaway Moxie	
General Description and Dimensions:	Offshore Support Vessel – 74 x 17 m
Call Sign:	MDBO3
MMSI:	232015469
Onshore Representative:	Seaway 7 Wick College Building, 1st Floor 1 The Shore, Wick, Caithness, Scotland Email. beatrice-mc@subsea7.com Ben Dixon Tel: 07736042134



Weekly Notice of Operations (WNoO)

Beatrice Offshore Windfarm Limited Construction Operations

Issue Date: 21st October 2019

LF000005-WNO-013: Weekly Notice of Operations - Rev 128

Dalby Ribble	
General Description and Dimensions:	Crew Transfer Vessel - L:25.75 x B:10 m
Call Sign:	2IVX5
MMSI:	235113236
Onshore Representative:	Seaway 7 Wick College Building, 1st Floor 1 The Shore, Wick, Caithness, Scotland Email. beatrice-mc@subsea7.com Ben Dixon Tel: 07736042134



Weekly Notice of Operations (WNoO)

Beatrice Offshore Windfarm Limited Construction Operations

Issue Date: 21st October 2019

LF000005-WNO-013: Weekly Notice of Operations - Rev 128

2.2 BOWL Foundation and Seabed Survey.

On behalf of BOWL, Fugro N.V. will utilise the survey vessel Fugro Frontier to conduct foundation surveys on ten selected WTG locations and both Offshore Transmission Modules. Surveys will also take place on selected Inter Array Cable routes and selected locations on Export Cables 1 and 2. The locations of the surveys are listed below.

Fugro Frontier	
General Description and Dimensions:	Survey Vessel – 54 x 12.5 m
Call Sign:	C6BH4
MMSI:	311000263
Onshore Representative:	Beatrice Offshore Windfarm Grey Coast Building Harbour Quay WICK Caithness KW1 5EN Caroline Carslaw – 07469 411955 Caroline.carslaw@sse.com



Weekly Notice of Operations (WNoO)

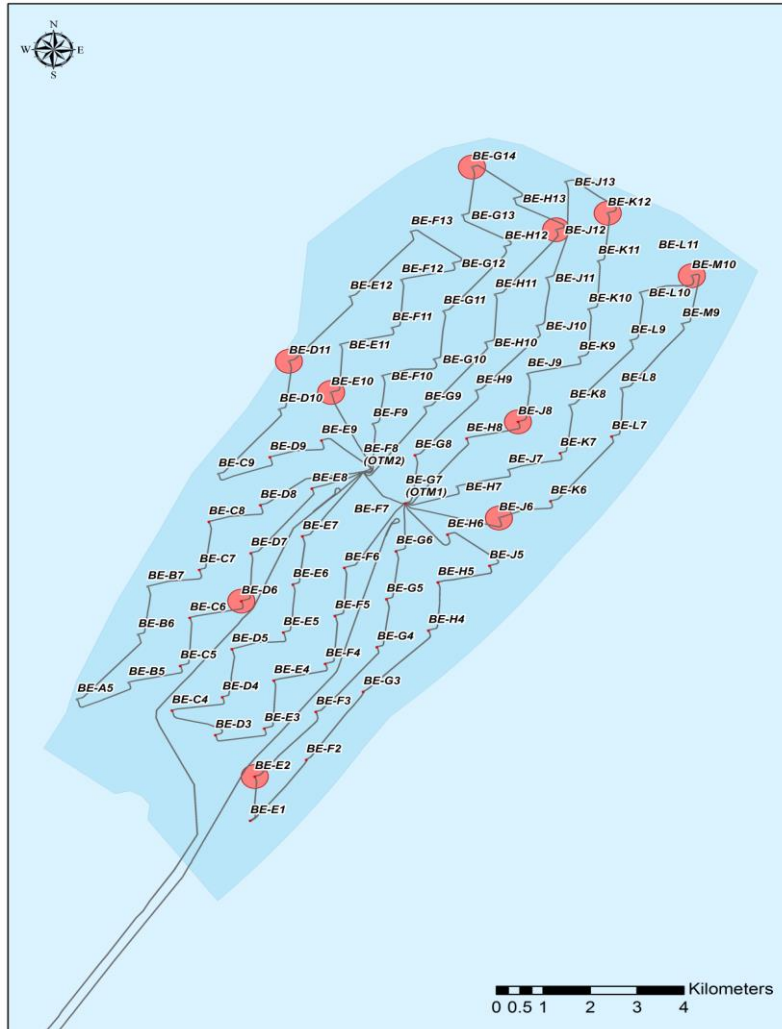
Beatrice Offshore Windfarm Limited

Construction Operations

Issue Date: 21st October 2019

LF000005-WNO-013: Weekly Notice of Operations - Rev 128

Fig 2 – WTG locations



WTG positions

ID	Latitude	Longitude
D06	58° 14.616' N	002° 53.251' W
D11	58° 14.606' N	002° 53.258' W
E02	58° 14.616' N	002° 53.251' W
E10	58° 14.437' N	002° 53.360' W
J06	58° 14.369' N	002° 53.402' W
J08	58° 14.270' N	002° 53.462' W
J12	58° 14.249' N	002° 53.475' W
J13	58° 14.211' N	002° 53.498' W
K12	58° 14.148' N	002° 53.536' W
M10	58° 14.098' N	002° 53.566' W
OTM1	58° 13.951' N	002° 53.656' W
OTM2	58° 13.933' N	002° 53.667' W

Weekly Notice of Operations (WNoO)

Beatrice Offshore Windfarm Limited

Construction Operations



Issue Date: 21st October 2019

LF000005-WNO-013: Weekly Notice of Operations - Rev 128

Inter Array Cable routes.

Cable	String	KP1 (km)	KP2 (km)	Range (m)
H06-J05	Amber	0.06	1.51	1450
G07-G06	Blue	0.03	1.2	1170
H11-J12	Red	0.39	2.03	1640
J12-H13	Red	0.15	0.81	660
J13-K12	Silver	0.08	1.43	1350
H08-J08	Teal	0.67	1.08	410
J09-K09	Teal	0.01	1.29	1280
K08-L09	Violet	1.06	1.92	860
L09-L10	Violet	0.4	0.98	580
J06-K06	Yellow	0.03	1.21	1180
K06-L07	Yellow	0.25	2.5	2250
L08-M09	Yellow	0.06	0.97	910
L10-M10	Yellow	0.03	0.54	510

Export Cable routes.

Cable	Description	Route KP	Length (m)	Depth (m)
EC1	Backhoe trench	3.8 to 4.5	700	10.5 -12
EC1	Boulder area	4.5 to 10.7	3100	12-32
EC1	Mid route joint	33.2 to 34.7	1500	51
EC1	Rock placement area	39.0 to 39.2	200	52
EC1	Rock placement area	63.0 to 64.5	1540	38
EC1	Rock placement area	65.7 to 67.2	1500	38
EC2	Backhoe trench	3.8 to 4.5	750	11-15
EC2	Boulder area	4.5 to 10.7	3100	15-32
EC2	Mid route joint	32.5 to 34.0	1500	51
EC3	Mid route joint	1.0 to 1.25	250	45

Weekly Notice of Operations (WNoO)

Beatrice Offshore Windfarm Limited

Construction Operations

Issue Date: 21st October 2019

LF000005-WNO-013: Weekly Notice of Operations - Rev 128

2.3 Offshore Installation of Wind Turbines

Siemens Gamesa Renewable Energy (SGRE) have now completed the installation and commissioning of 84 x 7.0 MW wind turbines in the Beatrice Offshore Windfarm (BOWL).

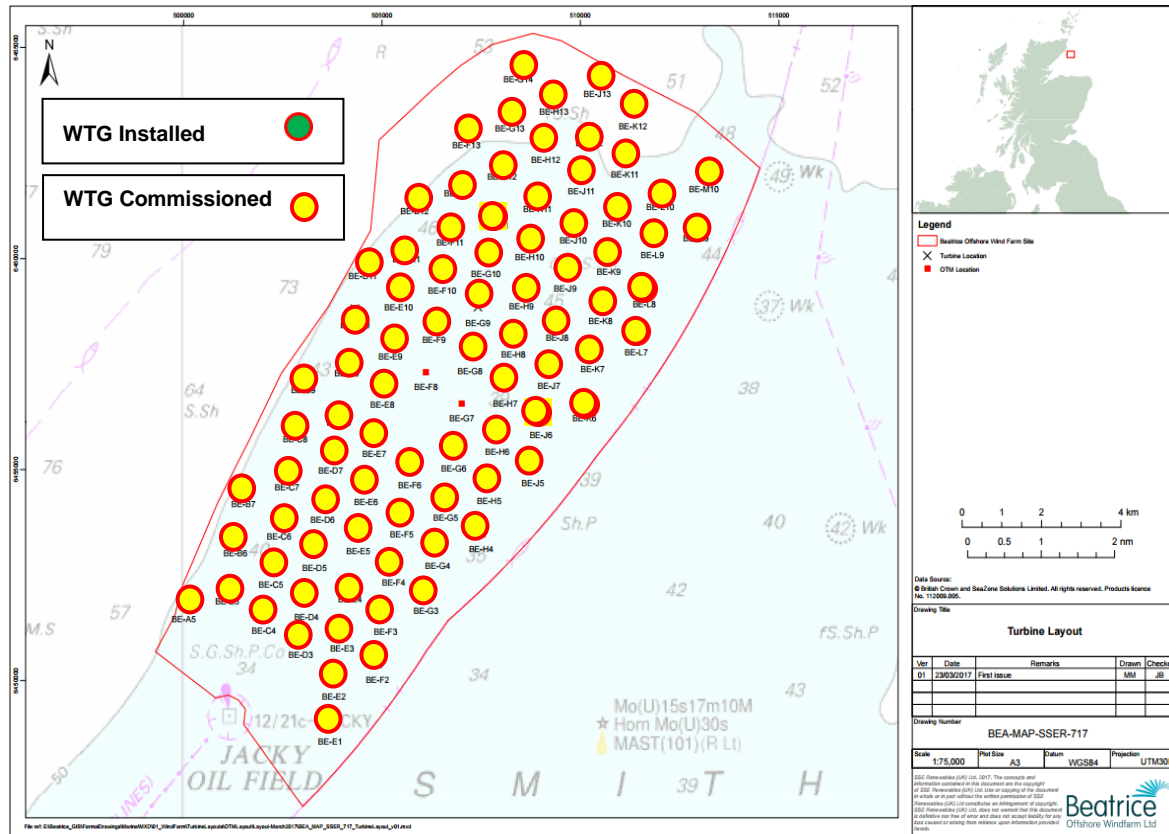


Fig. 3 Locations of WTG in the BOWL Construction Site

Table 1. WTG Installation and Commissioning Progress

Turbine installation completed at: 84 Locations

Turbine commissioning complete at: 84 Locations

Location ID	Latitude WGS84	Longitude WGS84	WTG Installed	WTG Commissioned
BE-A5	58° 12.471' N	002° 59.996' W	30.10.2018	12.11.2018
BE-B5	58° 12.687' N	002° 58.873' W	01.11.2018	16.11.2018
BE-B6	58° 13.308' N	002° 58.664' W	26.11.2018	07.12.2018
BE-B7	58° 13.929' N	002° 58.456' W	25.11.2018	06.12.2018
BE-C4	58° 12.307' N	002° 57.948' W	26.09.2018	09.10.2018
BE-C5	58° 12.902' N	002° 57.749' W	03.10.2018	28.10.2018
BE-C6	58° 13.524' N	002° 57.541' W	19.10.2018	05.11.2018

Weekly Notice of Operations (WNoO)

Beatrice Offshore Windfarm Limited Construction Operations



Issue Date: 21st October 2019

LF000005-WNO-013: Weekly Notice of Operations - Rev 128

Location ID	Latitude WGS84	Longitude WGS84	WTG Installed	WTG Commissioned
BE-C7	58° 14.144' N	002° 57.332' W	10.12.2018	30.12.2018
BE-C8	58° 14.766' N	002° 57.124' W	21.12.2018	07.01.2019
BE-C9	58° 15.386' N	002° 56.915' W	30.12.2019	17.01.2019
BE-D3	58° 11.995' N	002° 57.002' W	20.08.2018	03.09.2018
BE-D4	58° 12.497' N	002° 56.834' W	28.09.2018	11.10.2018
BE-D5	58° 13.117' N	002° 56.626' W	06.10.2018	22.10.2018
BE-D6	58° 13.739' N	002° 56.417' W	18.10.2018	16.11.2018
BE-D7	58° 14.359' N	002° 56.209' W	15.10.2018	28.10.2018
BE-D8	58° 14.981' N	002° 55.999' W	23.12.2018	03.01.2019
BE-D9	58° 15.602' N	002° 55.790' W	02.01.2019	16.01.2019
BE-D10	58° 16.223' N	002° 55.582' W	15.01.2018	28.01.2019
BE-D11	58° 16.844' N	002° 55.373' W	05.01.2019	16.01.2018
BE-E1	58° 10.900' N	002° 56.256' W	08.10.2018	22.10.2018
BE-E2	58° 11.470' N	002° 56.128' W	02.09.2018	15.09.2018
BE-E3	58° 12.090' N	002° 55.920' W	17.11.2018	29.11.2018
BE-E4	58° 12.712' N	002° 55.710' W	05.11.2018	21.11.2018
BE-E5	58° 13.333' N	002° 55.502' W	08.09.2018	19.09.2018
BE-E6	58° 13.954' N	002° 55.293' W	09.09.2018	06.10.2018
BE-E7	58° 14.575' N	002° 55.084' W	06.09.2018	17.09.2018
BE-E8	58° 15.196' N	002° 54.875' W	14.10.2018	29.10.2018
BE-E9	58° 15.817' N	002° 54.665' W	04.01.2019	30.01.2019
BE-E10	58° 16.438' N	002° 54.456' W	29.01.2019	11.02.2019
BE-E11	58° 17.059' N	002° 54.247' W	02.02.2019	12.02.2019
BE-E12	58° 17.680' N	002° 54.037' W	18.01.2018	30.01.2019
BE-F2	58° 11.685' N	002° 55.005' W	23.07.2018	06.08.2018
BE-F3	58° 12.306' N	002° 54.796' W	01.09.2018	12.09.2018
BE-F4	58° 12.927' N	002° 54.588' W	15.09.2018	28.09.2018
BE-F5	58° 13.548' N	002° 54.378' W	22.08.2018	13.09.2018
BE-F6	58° 14.168' N	002° 54.169' W	23.08.2018	09.08.2018
BE-F9	58° 16.031' N	002° 53.540' W	01.03.2019	13.03.2019
BE-F10	58° 16.653' N	002° 53.330' W	03.03.2019	26.03.2018
BE-F11	58° 17.274' N	002° 53.120' W	01.12.2018	21.12.2018
BE-F12	58° 17.894' N	002° 52.911' W	20.01.2019	06.02.2019
BE-F13	58° 18.516' N	002° 52.701' W	11.11.2018	13.12.2018
BE-G3	58° 12.544' N	002° 53.726' W	14.08.2018	25.08.2018
BE-G4	58° 13.142' N	002° 53.464' W	12.08.2018	24.08.2018
BE-G5	58° 13.762' N	002° 53.254' W	02.08.2018	22.08.2018
BE-G6	58° 14.384' N	002° 53.044' W	24.07.2018	23.08.2018
BE-G8	58° 15.625' N	002° 52.625' W	24.01.2019	05.02.2019
BE-G9	58° 16.247' N	002° 52.415' W	05.04.2019	16.04.2019
BE-G10	58° 16.867' N	002° 52.204' W	12.02.2019	25.02.2019
BE-G11	58° 17.488' N	002° 51.994' W	16.02.2019	28.02.2019
BE-G12	58° 18.109' N	002° 51.784' W	02.02.2019	13.02.2019
BE-G13	58° 18.730' N	002° 51.574' W	04.12.2018	15.12.2018
BE-G14	58° 19.351' N	002° 51.362' W	25.02.2019	19.03.2019
BE-H4	58° 13.356' N	002° 52.339' W	31.07.2018	20.08.2018

Weekly Notice of Operations (WNoO)

Beatrice Offshore Windfarm Limited Construction Operations



Issue Date: 21st October 2019

LF000005-WNO-013: Weekly Notice of Operations - Rev 128

Location ID	Latitude WGS84	Longitude WGS84	WTG Installed	WTG Commissioned
BE-H5	58° 13.977' N	002° 52.130' W	20.07.2018	03.08.2018
BE-H6	58° 14.598' N	002° 51.920' W	19.07.2018	01.08.2018
BE-H7	58° 15.219' N	002° 51.709' W	24.12.2018	06.01.2019
BE-H8	58° 15.840' N	002° 51.499' W	16.08.2018	24.11.2018
BE-H9	58° 16.461' N	002° 51.289' W	17.09.2018	24.11.2018
BE-H10	58° 17.082' N	002° 51.079' W	02.12.2018	15.12.2018
BE-H11	58° 17.703' N	002° 50.867' W	05.02.2019	23.02.2019
BE-H12	58° 18.324' N	002° 50.657' W	23.01.2019	03.02.2019
BE-H13	58° 18.944' N	002° 50.446' W	03.02.2019	14.02.2019
BE-J5	58° 14.192' N	002° 51.005' W	14.07.2018	10.08.2018
BE-J6	58° 14.812' N	002° 50.795' W	13.05.2019	25.05.2019
BE-J7	58° 15.433' N	002° 50.585' W	18.04.2019	30.04.2019
BE-J8	58° 16.055' N	002° 50.373' W	04.03.2019	10.04.2019
BE-J9	58° 16.675' N	002° 50.163' W	06.01.2019	19.01.2019
BE-J10	58° 17.296' N	002° 49.952' W	30.03.2019	12.04.2019
BE-J11	58° 17.917' N	002° 49.741' W	26.12.2018	14.01.2019
BE-J12	58° 18.538' N	002° 49.530' W	20.02.2019	21.03.2019
BE-J13	58° 19.159' N	002° 49.319' W	24.02.2019	21.03.2019
BE-K6	58° 15.027' N	002° 49.669' W	12.05.2019	23.05.2019
BE-K7	58° 15.648' N	002° 49.459' W	10.05.2019	21.05.2019
BE-K8	58° 16.269' N	002° 49.247' W	26.03.2019	10.04.2019
BE-K9	58° 16.890' N	002° 49.036' W	08.04.2019	23.09.2019
BE-K10	58° 17.510' N	002° 48.825' W	30.04.2019	16.05.2019
BE-K11	58° 18.131' N	002° 48.614' W	12.04.2019	24.04.2019
BE-K12	58° 18.752' N	002° 48.403' W	11.04.2019	25.04.2019
BE-L7	58° 15.862' N	002° 48.333' W	22.04.2019	03.05.2019
BE-L8	58° 16.482' N	002° 48.122' W	11.05.2019	23.05.2019
BE-L9	58° 17.104' N	002° 47.910' W	27.04.2019	08.05.2019
BE-L10	58° 17.724' N	002° 47.698' W	29.04.2019	11.04.2019
BE-M9	58° 17.317' N	002° 46.784' W	28.04.2019	10.05.2019
BE-M10	58° 17.938' N	002° 46.571' W	14.05.2019	29.05.2019

Weekly Notice of Operations (WNoO)

Beatrice Offshore Windfarm Limited

Construction Operations

Issue Date: 21st October 2019

LF000005-WNO-013: Weekly Notice of Operations - Rev 128

2.2.1 Activity Description

All commissioning works are now complete.



Fig. 4 Siemens SWT-7.0-154 WTG installed at Beatrice OWF

Weekly Notice of Operations (WNoO)

Beatrice Offshore Windfarm Limited

Construction Operations

Issue Date: 21st October 2019

LF000005-WNO-013: Weekly Notice of Operations - Rev 128

2.3 Operational & Maintenance (O & M)

Custody of all Strings has now been transferred from Project Construction to Operations and Maintenance (O & M).

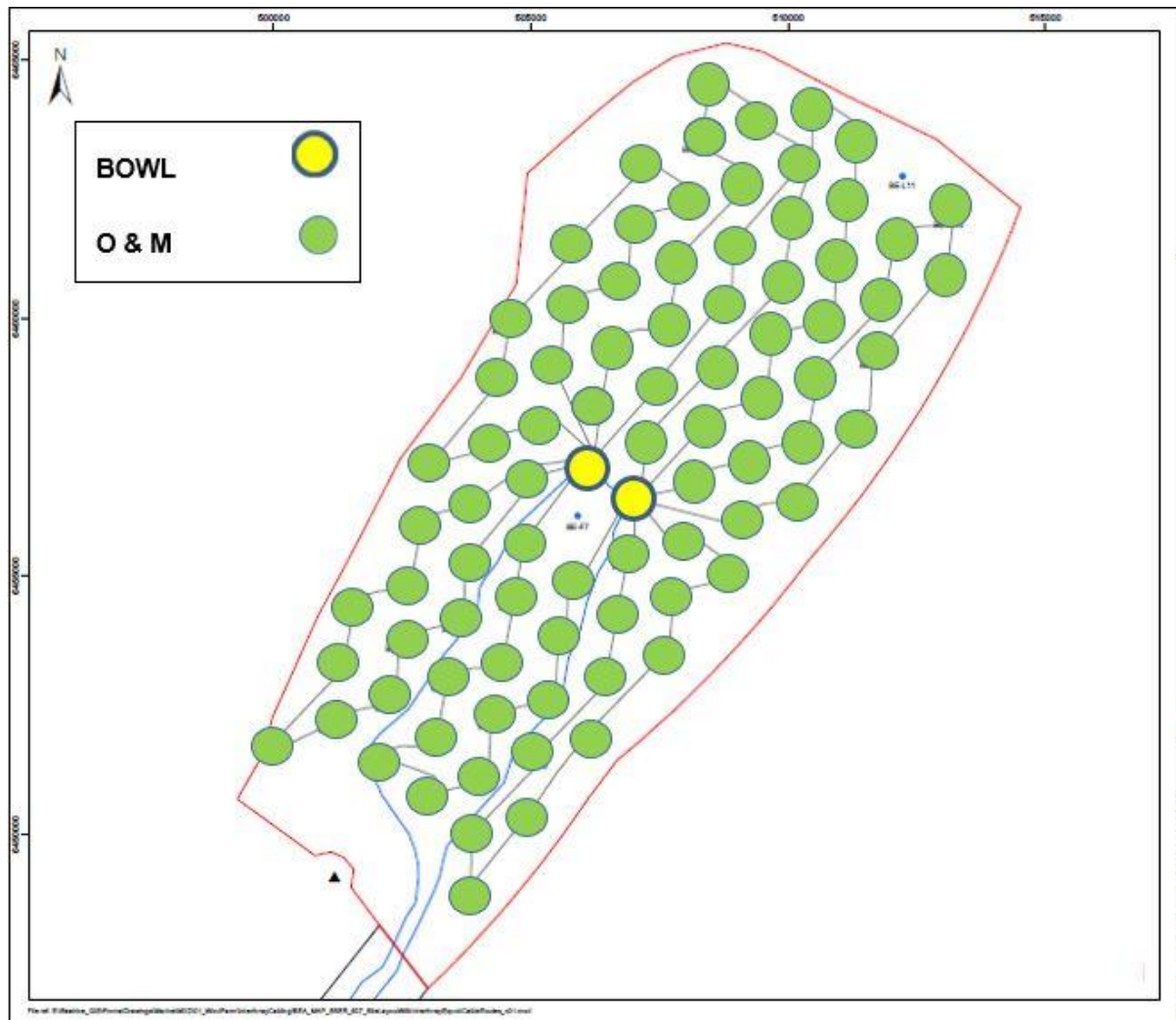


Fig. 5 Custody of Assets Chart

Weekly Notice of Operations (WNoO)

Beatrice Offshore Windfarm Limited

Construction Operations

Issue Date: 21st October 2019


LF000005-WNO-013: Weekly Notice of Operations - Rev 128

Siemens Gamesa Renewable Energy (SGRE Service) have taken over operational control of the scheduled maintenance and troubleshooting of all WTGs.

To assist them in this regard SGRE have engaged the Offshore Support Vessel Acta Orion, Crew Transfer Vessel Seacat Mischief and an Airbus H145 helicopter operated by the German company WIKING Helicopter Service GmbH. Acta Orion will support operations utilising their Uptime Gangway walk to work system.

The helicopter is based in a temporary hanger at Wick airport and will be used to transport SGRE technicians to work on the turbines when conditions to transfer by CTV are exceeded, but flying conditions are within limits.

2.3.1 Vessels & Aircraft Engaged in Activity

Acta Orion	
General Description and Dimensions:	Offshore Support Vessel L: 108m / B: 16m
Call Sign:	PCEN
MMSI:	244830883
Onshore Representative:	Barry Lucken Offshore Service Manager Beatrice Offshore Windfarm Ltd +44 7921 836268 Barry.lucken@siemensgamesa.com
	

Weekly Notice of Operations (WNoO)

Beatrice Offshore Windfarm Limited Construction Operations

Issue Date: 21st October 2019

LF000005-WNO-013: Weekly Notice of Operations - Rev 128

Seacat Mischief	
General Description and Dimensions:	Crew Transfer Vessel (CTV) L: 25m / B: 11m
Call Sign:	2IXU5
MMSI:	235113651
Onshore Representative:	Barry Lucken Offshore Service Manager Beatrice Offshore Windfarm Ltd +44 7921 836268 Barry.lucken@siemensgamesa.com
	

Wiking Helicopter H145	
General Description and Dimensions:	Airbus H145 Twin Engine, multi-purpose helicopter. LOA 13.63 x 3.29 x 4.00 m – Rotor diameter 11.0 m
Call Sign:	WHS2AG 'Wiking Two Alpha Golf'
Onshore Representative:	Barry Lucken Offshore Service Manager Beatrice Offshore Windfarm Ltd +44 7921 836268 Barry.lucken@siemensgamesa.com
	

Weekly Notice of Operations (WNoO)

Beatrice Offshore Windfarm Limited Construction Operations

Issue Date: 21st October 2019

LF000005-WNO-013: Weekly Notice of Operations - Rev 128

2.4 Scientific Equipment

The following table shows the locations of the University of Aberdeen's scientific moorings, which are currently located within the construction site.

Name	As laid coordinates (WGS84 datum)		Characteristics
160	58°17.648'N	002°49.931'W	Subsurface with transponder
161	58°13.000'N	002°56.011'W	Subsurface with transponder.
162	58°18.176'N	002°54.124'W	Subsurface with transponder.
164	58°12.911'N	002°51.845'W	Subsurface with transponder
164(A)	58°12.833'N	002°51.686'W	Subsurface
146	58°15.299'N	002°53.324'W	Subsurface with transponder
150	58°16.660'N	002°51.076'W	Subsurface with transponder

The moorings support sound recording equipment and acoustic loggers that record echolocation clicks of dolphins and porpoises (see images as the foot of this notice) Subsurface moorings fitted with acoustic releases extend no more than three metres vertically from the seabed. Subsurface moorings without acoustic releases extend no more than two metres vertically from the seabed.

A Notice to Mariners will be issued when the moorings are permanently discontinued.

For information and enquiries please contact:

Tim Candido- Barton,
Lighthouse Field Station, University of Aberdeen,
George Street, Cromarty,
Ross-shire,
IV11 8YL.
Tel: +44 (0)1381 600548.
t.r.barton@abdn.ac.uk



Fig. 6 Examples of equipment that the above moorings support

Weekly Notice of Operations (WNoO)

Beatrice Offshore Windfarm Limited

Construction Operations

Issue Date: 21st October 2019

LF000005-WNO-013: Weekly Notice of Operations - Rev 128

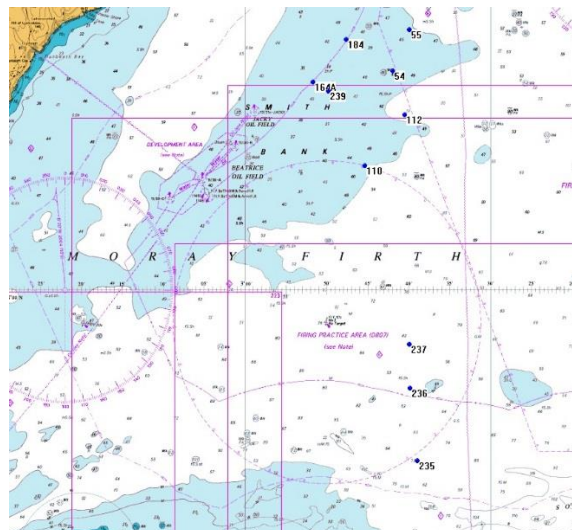
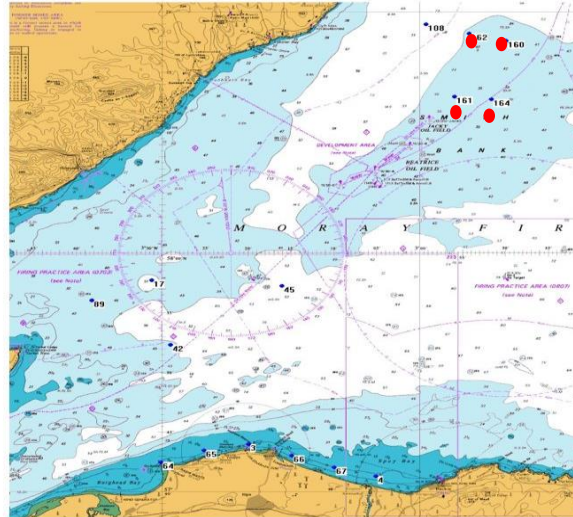


Fig. 7 Scientific equipment locations

3. General Safety Advice

All vessels engaged in the activity will exhibit appropriate lights and shapes prescribed by the International Regulations for Preventing Collisions at Sea; relative to their operations. All vessels engaged in the activity will also transmit an Automatic Identification System (AIS) message.

Weekly Notice of Operations (WNoO)

Beatrice Offshore Windfarm Limited

Construction Operations



Issue Date: 21st October 2019

LF000005-WNO-013: Weekly Notice of Operations - Rev 128

The Secretary of State has authorised the use of the following safety zones as per Notice to Mariners LF000005-NTM-004.

1. 500 metres radius around each wind turbine, offshore transformer module and / or their substructures and foundations comprising the Beatrice Offshore Wind Farm whilst work is being performed as indicated by the presence of construction vessels.
2. 50 metres radius around each wind turbine, offshore transformer module and / or their substructure and foundations installed but waiting to be commissioned as part of the Beatrice Offshore Wind Farm.

ALL VESSELS ARE REQUESTED to give all construction and support vessels a wide berth.

MARINERS ARE REMINDED to navigate with caution and keep continued watch on VHF Ch. 70 / 16 when navigating the area.

The Chart shown on page 19 below, shows the indicative transit routes and site entry gates for vessels entering the construction site from either the port of Wick (North) and Cromarty / Nigg (South) to avoid the highest density areas of static fishing gear.

4. Safety Zone Monitoring

Dedicated guard vessels have been utilised during all key construction activities on site, however now that the most vulnerable operations are complete, the guard duties covering the monitoring of Safety Zones, have been re-assigned to the Marine Coordination Centre (MCC) and other on-site vessels. The following conditions apply to ensure continuous monitoring during the remaining construction phase:

- Marine coordination undertaken in Wick from the established MCC, including 24-hour site monitoring via AIS and radar (both OTMs are fitted with AIS, X-band RADAR and marine VHF radios, including Digital Selective Calling (DSC));
- 500m safety zones around any structure where active construction work is ongoing (as denoted by the presence of a construction vessel);
- 50m safety zones around any finished structure up until the point of commissioning;
- All jackets have appropriate temporary or permanent lighting in operation;
- All jackets (both pre-and post-turbine installation) are marked with yellow paint as required;

Weekly Notice of Operations (WNoO)

Beatrice Offshore Windfarm Limited

Construction Operations



Issue Date: 21st October 2019

LF000005-WNO-013: Weekly Notice of Operations - Rev 128

- The agreed cardinal marks and special marks remain in place and will continue to be in place until the NLB are satisfied that final operational lighting and marking has been commissioned;
- The cardinal marks are broadcasting via AIS;
- Continued compliance with the BOWL Navigational Safety Plan
- The wind farm is marked on the appropriately scaled Admiralty Chart
- Weekly notices of operations and notices to mariners will continue to be issued, and notices will be submitted via Kingfisher bulletins where appropriate.

5. Fisheries Liaison

Fisheries liaison associated with the activity will be co-ordinated by Brown and May Marine. For any commercial fishery queries please contact:

Jen Miller Tel + 44 (0)1379 872144 Mobile +44 (0)7519 106002 jen.miller@brownmay.com

All vessels are to be aware that there has been increased fishing activity close to the BOWL site and vessels may encounter static fishing gear whilst transiting to and from the site. Vessels sheltering to the South and West of the site should pay particular attention and keep a sharp lookout for such static fishing gear. Vessels are reminded that there are recommended transit routes to site, which should help avoid the areas of known fishing activity. (See chart Page 19)

6. Distribution List

The distribution of this notice is as per email recipient's header. A central list of recipients is maintained by the Marine Coordinator. If you are not the appropriate recipient of these notices or do not wish to receive the notices in the future, please contact us at the address included in Section 1 of this notice.

7. Website

The official website of Beatrice Offshore Windfarm Limited can be found at:

<https://www.beatricewind.com>

This contains all Notices to Mariners (NtM) published by BOWL and all Weekly Notices of Operations, together with a large amount of general information about the Project.

There is also a Twitter feed at <https://twitter.com/beatricewind>.

Weekly Notice of Operations (WNoO)

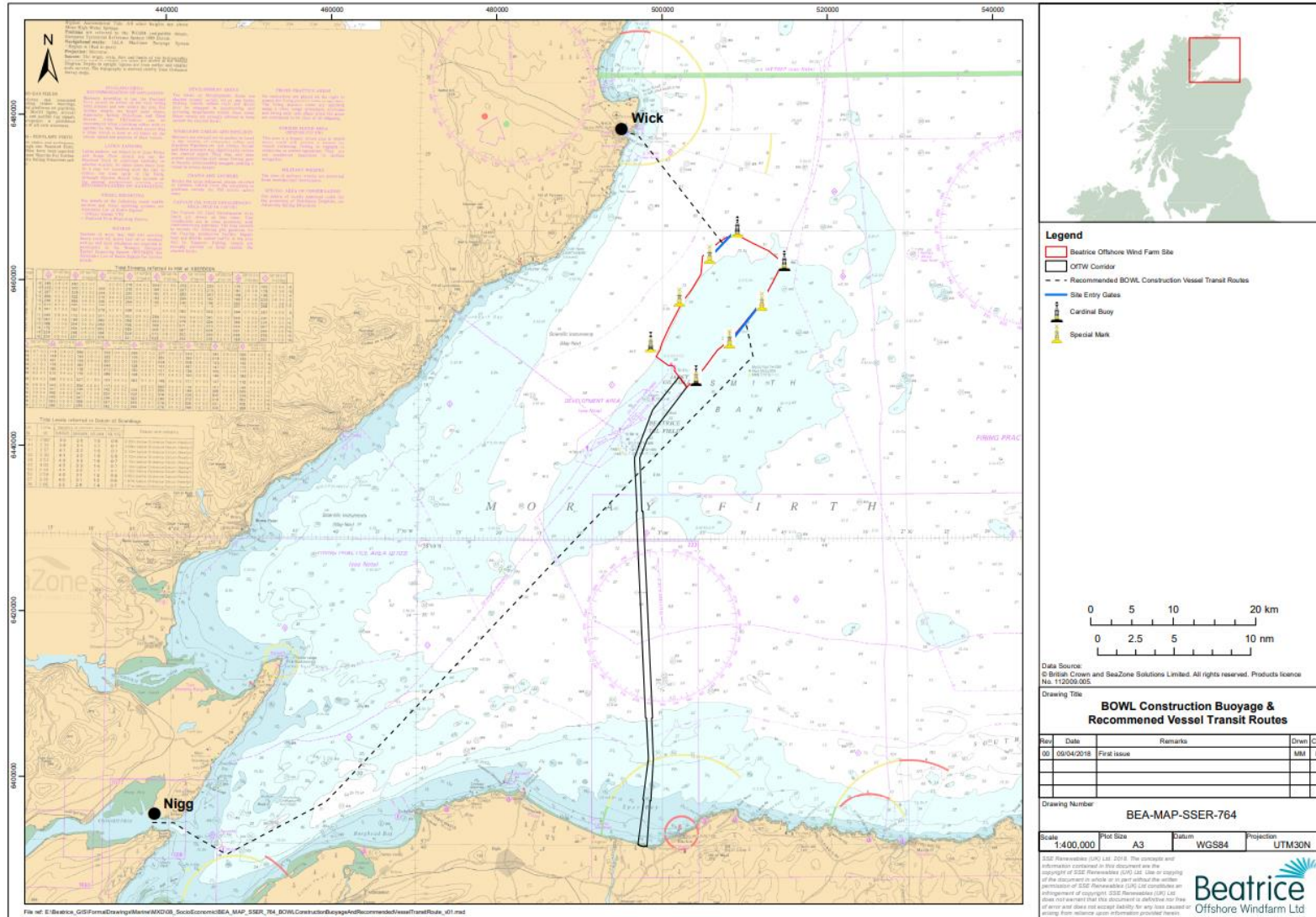
Beatrice Offshore Windfarm Limited

Construction Operations



Issue Date: 21st October 2019

LF000005-WNO-013: Weekly Notice of Operations - Rev 128



Weekly Notice of Operations (WNoO)





Beatrice Offshore Windfarm Limited

Construction Operations



Issue Date: 21st October 2019

LF000005-WNO-013: Weekly Notice of Operations - Rev 128

Beatrice Offshore Windfarm Vessels & Operators									21.10.2019
Reference to Marine Licence Conditions 2.5, 2.6 and 3.1.2									
Vessel Data Matrix OWF									
No	Vessel Picture	Vessel Name / Flag	Type / Function	Operator	Contact / contact details	Call sign / MMSI / IMO	LOA (m) Beam (m) Draft (m)	Date on Site	Marine Licence applicable
1		Seacat Intrepid	Crew Transfer Vessel / CTV	Seacat Services Ltd	Andrew Link Operations Manager, Seacat Services Ltd 2 Mariners Way, Cowes, Isle of Wight +44 (0)1983 475315 operations@seacatservices.co.uk	2HWU6 / 235107284	27 x 10 x 1.5m	25.09.2017	OWF & OTW
2		CTV Seacat Mischief	Crew Transfer Vessel / CTV	Siemens Gamesa Renewable Energy (SGRE)	Barry Lucken Offshore Service Manager Beatrice Offshore Windfarm +44 7921 836268 barry.lucken@siemensgamesa.com	2IXU5 / 235113651	24 x 8m	15.08.2018	OWF
3		CTV Seacat Magic	Crew Transfer Vessel / CTV	Siemens Gamesa Renewable Energy (SGRE)	Barry Lucken Offshore Service Manager Beatrice Offshore Windfarm +44 7921 836268 barry.lucken@siemensgamesa.com	2DJI2 / 235114973	23 x 8 m	16.01.2019	OWF
4		CTV Seacat Volunteer	Crew Transfer Vessel / CTV	Seacat Services Ltd	Andrew Link Operations Manager, Seacat Services Ltd 2 Mariners Way, Cowes, Isle of Wight +44 (0)1983 475315 operations@seacatservices.co.uk	2HCP6 / 235102528	24 x 8 x 1.4m	21.03.2019	OWF

Weekly Notice of Operations (WNoO)





Beatrice Offshore Windfarm Limited

Construction Operations



Issue Date: 21st October 2019

LF000005-WNO-013: Weekly Notice of Operations - Rev 128

Beatrice Offshore Windfarm Vessels & Operators									21.10.2019
Reference to Marine Licence Conditions 2.5, 2.6 and 3.1.2			Vessel Data Matrix OWF				Beatrice Offshore Windfarm Ltd		
No	Vessel Picture	Vessel Name / Flag	Type / Function	Operator	Contact / contact details	Call sign / MMSI / IMO	LOA (m) Beam (m) Draft (m)	Date on Site	Marine Licence applicable
5		Dalby Ribble	Crew Transfer Vessel / CTV	Seaway 7	Seaway 7 Wick College Building 1st Floor, 1 The Shore, Wick Caithness Scotland Email. beatrice-mc@subsea7.com Ben Dixon - 07736 042134	2IVX5 / 235113236	25.75 x 10.06m	02.10.2019	OWF
6		Seaway Moxie	Offshore Supply Vessel / Walk to Work	Seaway 7	Seaway 7 Wick College Building 1st Floor, 1 The Shore, Wick Caithness Scotland Email. beatrice-mc@subsea7.com Ben Dixon - 07736 042134	MDBO3 / 232015469 IMO 9676216	74 m x 17 m	18.09.19	OWF
7		Acta Orion	Offshore Supply Vessel / Walk to Work	Siemens Gamesa Renewable Energy (SGRE)	Barry Lucken Offshore Service Manager Beatrice Offshore Windfarm +44 7921 836268 barry.lucken@siemensgamesa.com	PCEN / 244830883	108 x 16 m	15.10.2019	OWF
8		Fugro Frontier	Survey Vessel	BOWL	Caroline Carslaw Project Engineer Beatrice Offshore Windfarm 07469 411955 caroline.carslaw@sse.com	2DJ12 / 235114973	23 x 8 m	16.10.2019	OWF & OWTW